

H-series Telescopic Boom Lift

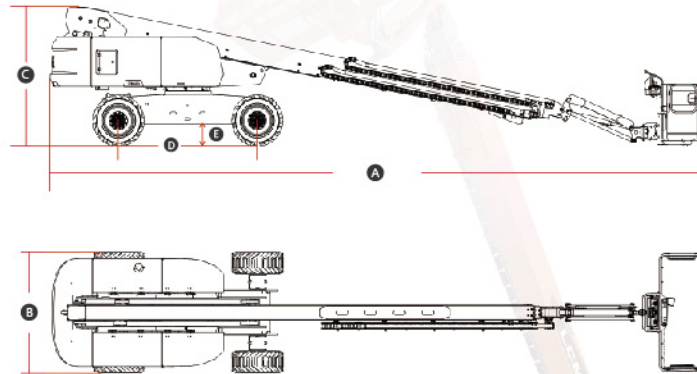
STANDARD FEATURES

- Proportional control
- Overload sensing system
- Descent alarm with flashing beacon
- Platform auto-leveling system
- Emergency stop button
- On-board diagnostic system
- Oscillating axle
- Over tilt protection system
- Anti-entrapment protection
- Platform control cover
- Cylinder bellows
- 2.44m large working platform

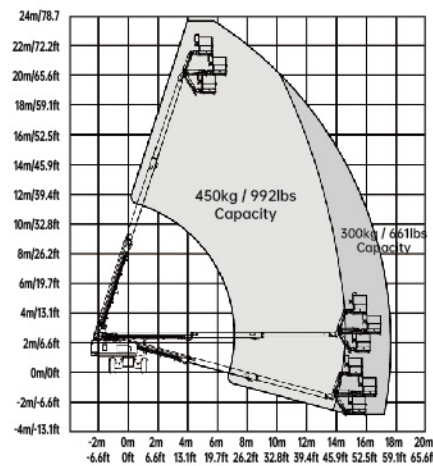
OPTIONAL

- AC power to platform
- Telematics
- Hydraulic generator
- Non-marking tires
- Solid tires
- Cold weather packages

MACHINE SIZE



T22J-H WORKING RANGE



LGMG H-SERIES TELESCOPIC BOOM LIFT



Please contact LGMG or a local dealer for more details.
LGMG reserves the right to change technical data without prior notice. All photos and pictures in this brochure are for promotional purposes only.
This brochure comes into effect in May, 2022.

LINGONG HEAVY MACHINERY CO., LTD.

Address: No. 2676, Kejia Road, Jinan, Shandong, China
Email: sales@lmgm.com.cn Tel: +86 531 6787 9283

LGMG Europe B.V.

Address: Laanweg 16 3208LC Spijkenisse Rotterdam, The Netherlands
Email: sales@lmggeurope.com Tel: +31 850 642 777

LGMG North America Inc.

Address: 1445 Sheffler Dr, Chambersburg, PA. 17201, USA
Email: sales@lmgna.com Tel: +1 833 288 5464

www.lmgglifts.com

 **LGMG**
RELIABILITY IN ACTION

H High Capacity High Productivity

When you hire an MEWP for construction, the higher capacity of the equipment leads to higher work efficiency and the creation of more value. LGMG is well aware of the needs of our customers and we have launched a full range of engine-powered high-capacity telescopic boom lifts. With working heights from 21.8 to 29.8m (71.5/97.8ft), indoor-outdoor application, a maximum occupancy of 3 people and a 450/300kg (992/661lbs) dual-capacity design, this series allows for more material to be loaded at one time, which greatly enhances work efficiency.

FEATURES

- Axle oscillation full floating, maximum 5 degree tilt angle chassis. It allows the wheels to grip to the ground when navigating hard, uneven terrain.
- Automatic engine speed control with a boom that descends by its own weight. Allows smooth movement, saves energy, and reduces noise.
- Proportional lift and drive controls deliver smoother maneuvering, precise positioning and comfortable operation.
- Intelligent diagnostic and control system with precise fault analysis, convenient and efficient.
- More than 95% of the main components and more than 80% of the structural parts are interchangeable, which helps to reduce spare parts storage costs and improves maintenance efficiency.



SPECIFICATIONS

MODELS	T20J-H (T65J-H)		T22J-H (T72J-H)		T26J-H (T85J-H)		T28J-H (T92J-H)		
Measurements	Metric	US	Metric	US	Metric	US	Metric	US	
Work Height Max.	(m/ft)	21.8 / 71.5	23.8 / 78.1	27.9 / 91.5	29.8 / 97.8				
Platform Height	(m/ft)	19.8 / 65	21.8 / 71.5	25.9 / 85	27.8 / 91.2				
Horizontal Outreach Max.	(m/ft)	16.6 / 54.1	17 / 55.8	22.3 / 73.2	22.5 / 73.8				
Platform Length	(m/in)	2.44 / 96	2.44 / 96	2.44 / 96	2.44 / 96				
Platform Width	(m/in)	0.9 / 35	0.9 / 35	0.9 / 35	0.9 / 35				
A Length-Stowed	(m/ft)	10.2 / 33.5	11 / 36.09	12.72 / 41.75	13.4 / 44				
Length - Transport (jib tucked)	(m/ft)	8.30 / 27.23	9.03 / 29.63	11 / 36.09	11.47 / 37.63				
B Overall Width	(m/ft)	2.49 / 8.17	2.49 / 8.17	2.5 / 8.17	2.5 / 8.17				
C Height-Stowed	(m/ft)	2.775 / 9.08	2.775 / 9.08	2.825 / 9.25	2.825 / 9.25				
Height - Transport	(m/ft)	2.89 / 9.48	2.88 / 9.45	3.03 / 9.94	3.02 / 9.91				
D Wheelbase	(m/ft)	2.51 / 8.25	2.51 / 8.25	2.85 / 9.33	2.85 / 9.33				
E Ground Clearance	(m/ft)	0.395 / 1.29	0.395 / 1.29	0.425 / 1.42	0.425 / 1.42				
PRODUCTIVITY									
Platform Capacity (unrestricted) (kg/lbs)		300 / 661	300 / 661	300 / 661	300 / 661				
Platform Capacity (restricted) (kg/lbs)		450 / 992	450 / 992	450 / 992	450 / 992				
Max. Platform Occupancy		2(unrestricted) / 3(restricted)							
Turntable Rotation		360°Continuous		360°Continuous		360°Continuous		360°Continuous	
Drive Speed-Stowed (km/h mph)		4.8 / 3	4.8 / 3	4.8 / 3	4.8 / 3	4.8 / 3	4.8 / 3	4.8 / 3	
Drive Speed-Raised (km/h mph)		0.8 / 0.5	0.8 / 0.5	0.8 / 0.5	0.8 / 0.5	0.8 / 0.5	0.8 / 0.5	0.8 / 0.5	
Gradeability		45%		45%		45%		45%	
Max. Wind Speed (m/s mph)		12.5 / 28	12.5 / 28	12.5 / 28	12.5 / 28	12.5 / 28	12.5 / 28	12.5 / 28	
Turning Radius-Inside (m/ft)		2.5 / 8.2	2.5 / 8.2	3.66 / 12	3.66 / 12	3.66 / 12	3.66 / 12	3.66 / 12	
Turning Radius-Outside (m/ft)		5.5 / 18	5.5 / 18	6.55 / 21.5	6.55 / 21.5	6.55 / 21.5	6.55 / 21.5	6.55 / 21.5	
Max.Slope		5°/5°		5°/5°		5°/5°		5°/5°	
Tire Type		RT Foam-filled		RT Foam-filled		RT Foam-filled		RT Foam-filled	
Tire Size		355/55D 625		355/55D 625		18-625		18-625	
POWER									
Power		36kw / 48.3hp				55.4kw / 74.3hp			
Fuel Tank Capacity (L/gal)		100 / 26.4	100 / 26.4	100 / 26.4	100 / 26.4	100 / 26.4	100 / 26.4	100 / 26.4	
HYDRAULIC SYSTEM									
Hydraulic Oil Volume (L/gal)		180 / 47.5	180 / 47.5	180 / 47.5	180 / 47.5	180 / 47.5	180 / 47.5	180 / 47.5	
WEIGHT									
Machine Weight(CE/ANSI) (kg/lbs)		12000 / 26455	12300 / 27117	18300 / 40345	18800 / 41447				