

# LGMG

## AR24J

### ARTICULATING BOOM LIFT

- Axle-integrated four-wheel drive system, with strong power and smooth transmission.
- Three steering modes: front-wheel, crab and four wheel steering, to meet the demand of operations in narrow space.
- Realize all-round aerial working through booms compound action.
- Full time floating to ensure driving safety.
- Higher anti-torsional strength frame to satisfy container transportation conditions.



# LGMG Diesel - Articulating Boom Lift

## SPECIFICATIONS

MODELS	AR24J (AR80J)	
	Metric	Imperial
Measurements		
Work Height Max.	26.6m	87'3"
Platform Height Max.	24.6m	80'9"
Horizontal Outreach	18m	59'1"
Up and Over Height	8.83m	28'11"
Platform Length	2.44m	8'
Platform Width	0.9m	2'11"
<b>A</b> Stowed Length	11.6m	36'1"
Length-Transport (jib tucked)	9.07m	29'9"
<b>B</b> Overall Width	2.5m	8'2"
<b>C</b> Stowed Height	2.83m	9'3"
Height-Transport	3.36m	11'
<b>D</b> Wheelbase	2.85m	9'4"
<b>E</b> Ground Clearance	0.4m	1'4"

### PRODUCTIVITY

Platform Capacity (unrestricted)	250kg	551 lbs
Platform Capacity (restricted)	350kg	772 lbs
Max. Platform Occupancy	2 (unrestricted) / 3 (restricted)	
Turntable Rotation	360°	
Drive Speed-Stowed	5km/h	3.1mph
Drive Speed-Raised	0.8km/h	0.5mph
Gradeability	45%	
Max. Wind Speed	12.5m/s	28mph
Turning Radius-Inside	2.04m	6'8"
Turning Radius-Outside	4.13m	13'7"
Max.Slope	5°/5°	
Tires Type	Foam-filled	
Tires Models	15-625	

### POWER

Power Source	Kubota V2403 36kw/48.2hp	
Fuel Tank Capacity	100L	26.4gal

### HYDRAULIC SYSTEM

Hydraulic Oil Volume	162L	42.8gal
----------------------	------	---------

### WEIGHT

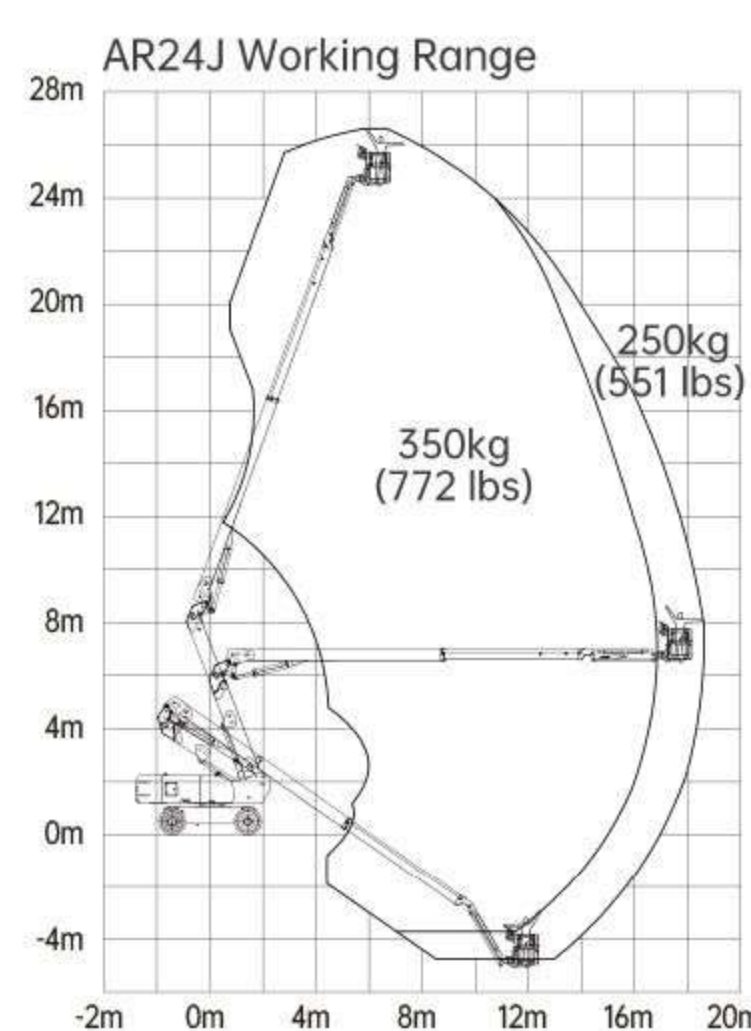
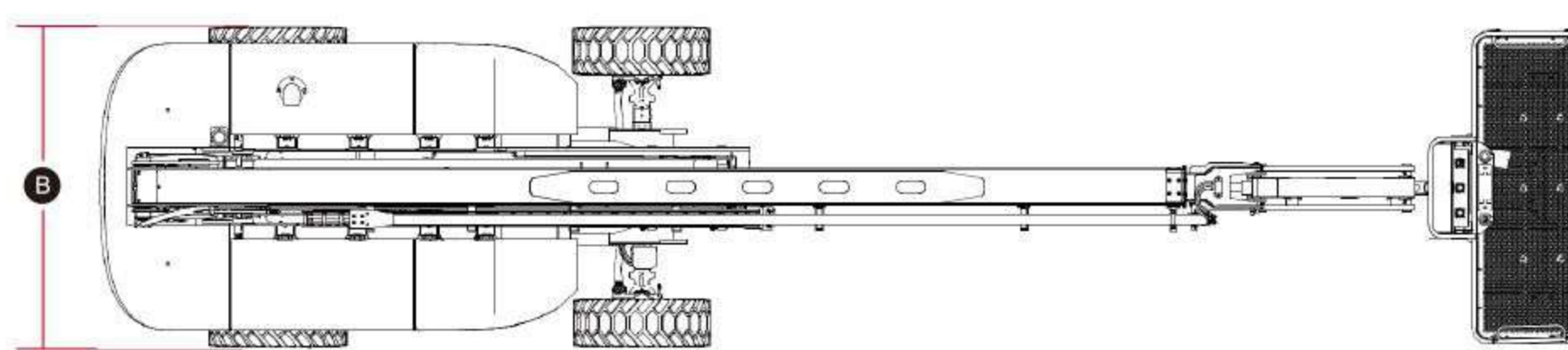
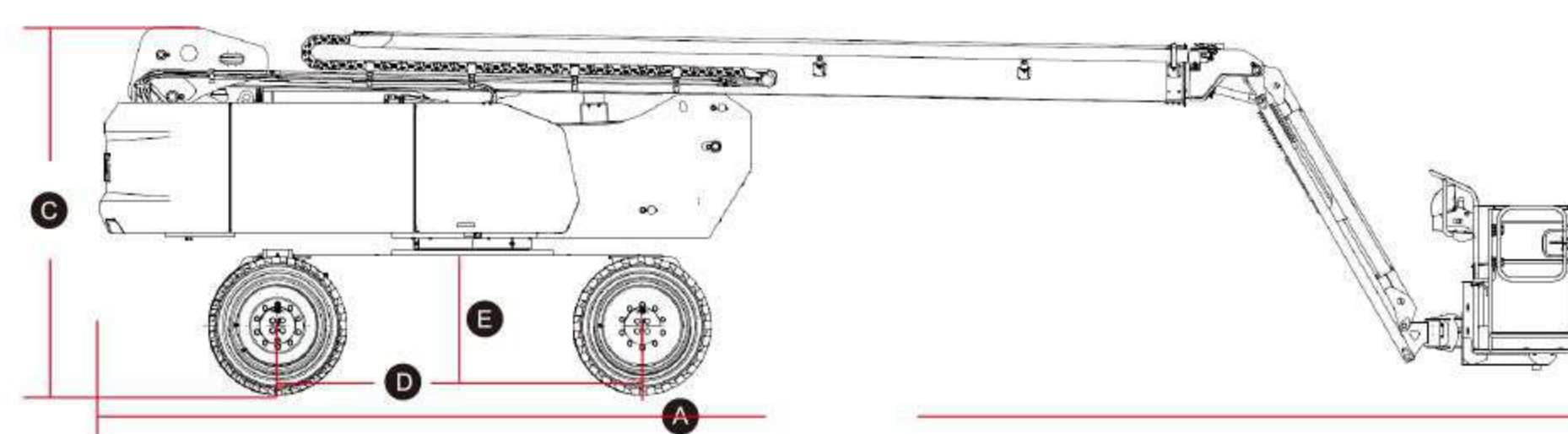
Machine Weight	17,300kg	38,139 lbs
----------------	----------	------------

### STANDARD FEATURES

Proportional control	Emergency stop device
Horn/Hour meter	Auto-leveling platform
Full-height drive	Anti-collision protection
Flashing beacons	Over tilt protection system
Cylinder bellows	Platform control cover
Oscillating axle	Overload sensing system
Platform tool box	Intelligent diagnostic system
Telematics connector	Foam-filled tires

### OPTIONAL

Telematics	Solid tires
AC power to platform	Solid non-marking tires
Half-height mesh platform	Foam-filled non-marking tires
Auxiliary rail	Biodegradable hydraulic oil
Hydraulic generator kit	3.5kw Hydraulic generator
Cold weather package	



Please contact LGMG or a local dealer for more details.

LGMG reserves the right to change technical data without prior notice. All photos and pictures in this brochure are for promotional purposes only.

### LINGONG HEAVY MACHINERY CO., LTD.

Address: No. 2676, Kejia Road, Jinan, Shandong, China  
 Email: sales@lmgm.com.cn Tel: +86 531 6787 9283

### LGMG Europe B.V.

Address: Donker Duyvisweg 301, 3316 BL Dordrecht, The Netherlands  
 Email: sales@lmgmeurope.com Tel: +31 850 642 777

### LGMG North America Inc.

Address: 4105 Live Oak Drive, Suite 100, The Colony, Texas 75056 United States  
 Email: sales@lmgmna.com Tel: +1 833 288 5464

www.lmgmlifts.com



**LGMG**  
 RELIABILITY IN ACTION