

H1840

TELEHANDLER

18m
WORKING HEIGHT

4000kg
RATED LOAD

The LGMG H1840 Telehandler is the perfect choice for construction work.

The H1840 is sturdy yet manoeuvrable, with excellent performance and strong four-wheel drive capabilities. Its three steering modes and frame leveling function make the H1840 the perfect machine to tackle complex or difficult working conditions.



LINGONG HEAVY MACHINERY CO., LTD.

Address: No. 2676, Kejia Road, Jinan, Shandong, China

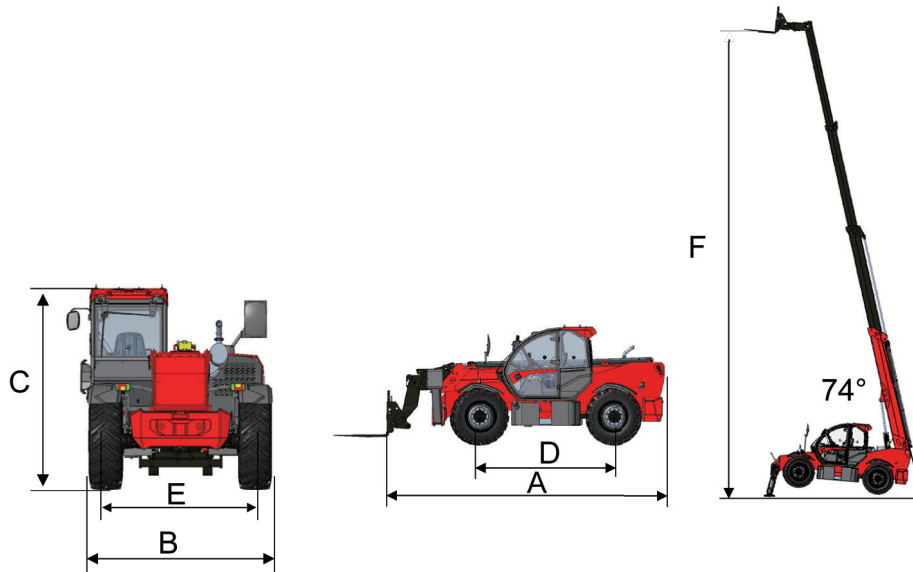
Email: sales@lmg.com.cn Tel: +86 531 6787 9283

www.lmglifts.com



RELIABILITY IN ACTION

Product Dimensions and Parameters



Machine Parameters				
Measurements	Metric	Measurements	Metric	
Max. Capacity	4000kg	Drive /Steering Mode	4Wheel Drive, 4 Wheel Steer	
Overall Weight	12350kg	Forward	First Gear Travel Speed	5km/h
Max. Lifting Height	17.6m		Second Gear Travel Speed	12km/h
Max. Outreach	13.1m		Third Gear Travel Speed	20km/h
Min. Turning Radius	4.2m		Fourth Gear Travel Speed	30km/h
Gradeability-Unladen	65%	Backward	First Gear Travel Speed	5km/h
Tilt Angle	±9°		Second Gear Travel Speed	12km/h
Max. Braking Distance-Unladen	5.5 (20km/h)		Third Gear Travel Speed	20km/h
Primary Boom Ascending Time	11-17.5s	Boom Extending Time	15-22.5s	
Primary Boom DescendingTime	16-23.5s	Boom Retracting Time	11-18s	

Dimensions			
Measurements	Metric	Measurements	Metric
Overall Length - A	6.28m	Wheel Track - E	1.96m
Overall Width - B	2.44m	Max. Lifting Height - F	17.6m
Overall Height - C	2.68m	Ground Clearance	0.41m
Wheelbase - D	3.07m	Standard Tyres	440/80R24

Engine			
Measurements	Metric	Measurements	Metric
Power Source	Perkins engine (EU Stage V)	Rated Power	74.5kw

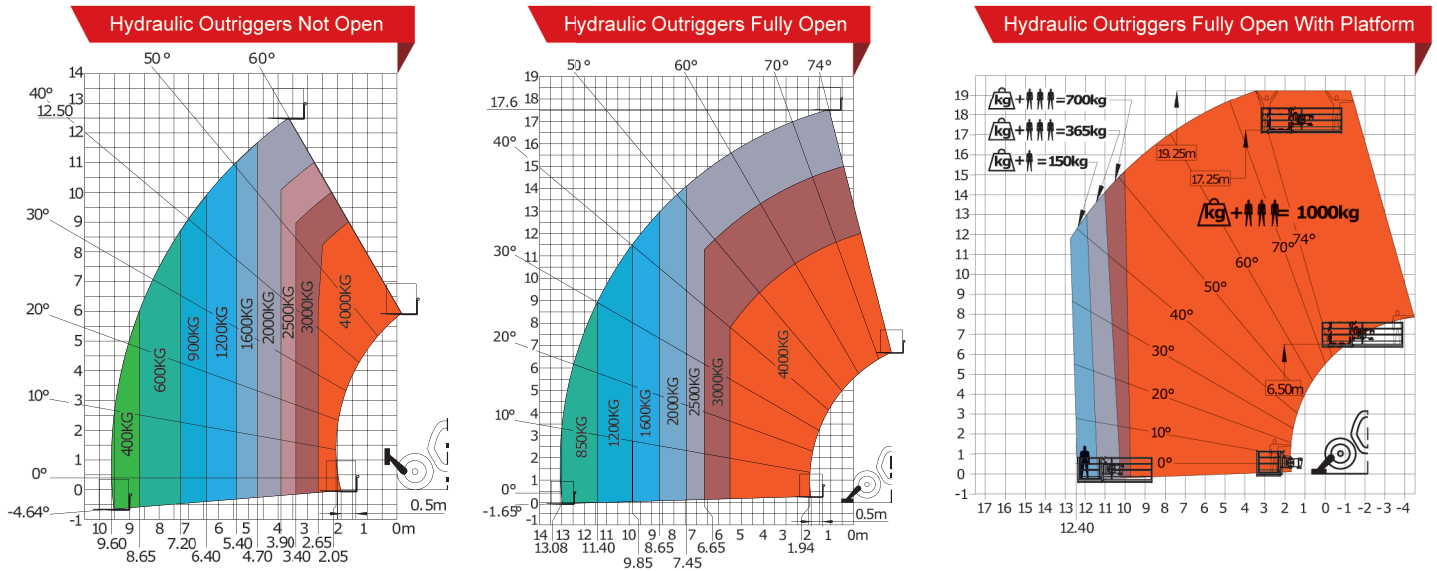
Tank Capacities			
Measurements	Metric	Measurements	Metric
Hydraulic Oil Capacity	180L	Fuel Tank Capacity	150L

Please contact LGMG or your local dealer for more details.

LGMG reserve the right to change technical data without prior notice. All photos and pictures in this brochure are for promotional purpose only.

This brochure comes into effect in February 2022.

Load Chart



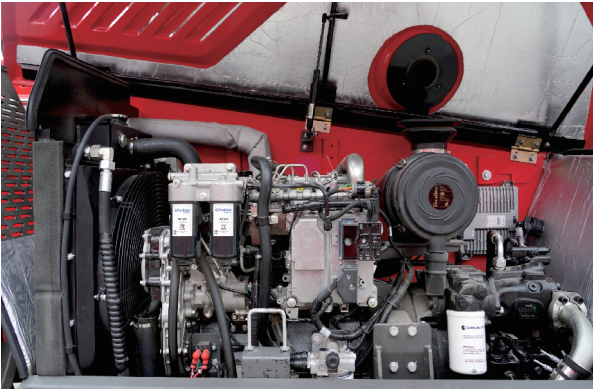
Various Replaceable Tools

- Standard Fork**
- Extension Work Platform**
- Fixed Work Platform**
- Extension Jib**
- Frame Mounted Hook**
- Material Bucket**
- General Purpose Bucket**

Highlight Advantages

01 High Power, Low Fuel Consumption

- Uses the internationally-renowned Perkins engine and transmission system, with strong power, smooth transmission, ultra-low fuel consumption, high reliability and strong durability.



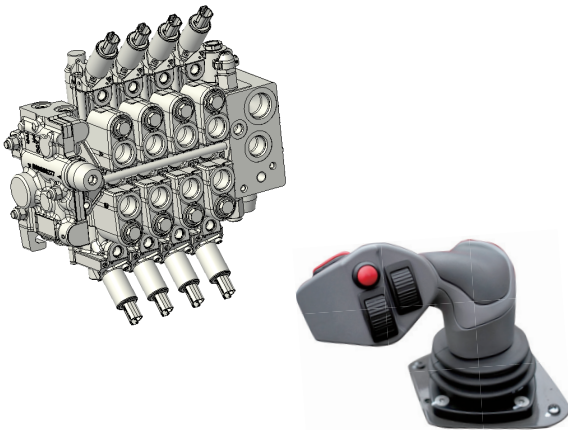
02 Advanced Configuration, Safety and Comfort

- The new FOPS&ROPS cab and hood significantly reduce any harm to the driver in the event of a vehicle rollover as well as blocking falling objects to maximise protection of driver.
- The spacious cab is designed with operators' comfort in mind. It offers a wide field of vision and a well-planned design which reduces fatigue.



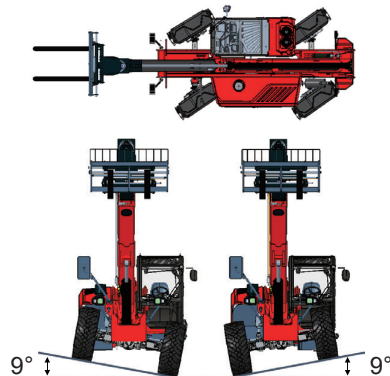
03 Efficient Energy Saving, Precise Operation

- The machine has a load-sensitive control system. Its high sensitivity and precise control ensure a superior performance.
- With a fully hydraulic braking system allowing stable and reliable braking to improve safety.



04 Versatile and Adaptable

- The telehandler has three steering modes: front wheel steering, crab steering, and in-situ steering, perfect for customers who need to operate the machine in a restricted space.
- An emergency steering function improves safety when driving.
- The frame leveling function allows the telehandler to adapt easily to different working environments, as the frame can be tilted 9° left and right.



05 Intelligent Control

- The H1840's intelligent systems make your work easier. A large high-definition screen presents vehicle information and operating parameters to the operator, making the machine more easier to operate. Real-time vehicle control feedback is displayed to help with safe operation and troubleshooting.
- Reserve GPS port allows additional GPS devices from different countries to be added.