

TB60

STRAIGHT TELESCOPING BOOM

POWER IN EXPERIENCE

- 40% less lifetime maintenance cost than leading competitors
- Ready for the job site - foam filled tires standard
- 125% lifetime ROI

Snorkel

www.snorkelusa.com



TB60

STRAIGHT TELESCOPING BOOM

PLATFORM

Height60' (18.3 m)
A. Size30" x 60" (76 x 152 cm)
 Capacity.....500 lbs (227 kg)
 Construction.....Steel

MACHINE DIMENSIONS

B. Stowed Height8'9" (2.7 m)
C. Stowed Length30'10" (9.4 m)
D. Wheelbase10' (3.1 m)
 Width8'1/2" (2.5 m)
 Ground Clearance1'1" (33 cm)
 Weight20,700 lbs (9389 kg)
 Tire Size15 x 19.5 (Foam Filled)

PERFORMANCE

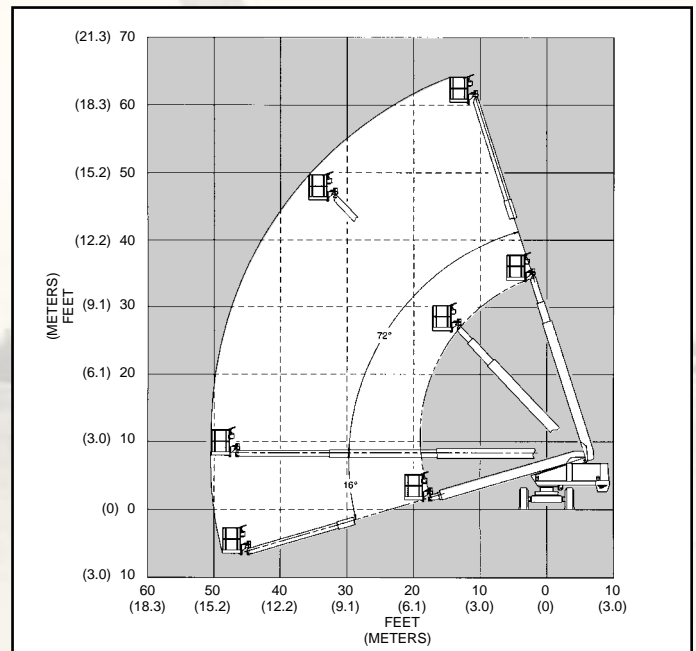
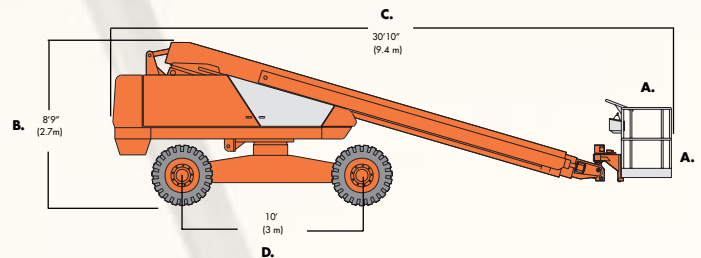
Horizontal Reach50' (15.2 m)
 Power Source.....Gas or Diesel
 Fuel Capacity40 gal (151.4 L)
 Hydraulic tank cap35 gal (132.5 L)
 Drive speed
 ElevatedCreep
 Stowed3 mph (4.8 kph)
 Gradeability.....25%

OPTIONS

- Operator horn
- Platform control box cover
- Platform work lights
- Flashing light on boom
- Swinging gate
- Sandblast protection kit
- Driving lights
- Dual Fuel
- Spark arrestor muffler
- Cold weather start kit
- AC Generator
- Drive motion alarm
- Tow kit
- Four wheel drive
- Airline to platform
- 92" x 30" (234 x 76 cm) Aluminum platform capacity 600lbs. [273 kg]
- 92" x 30" (234 x 76 cm) Steel platform capacity 500lbs. [227 kg]

STANDARD FEATURES

- 360 degree continuous turntable rotation
- Proportional controls
- Printed circuit board with on-board LED diagnostics
- 180 degree hydraulic platform rotation
- 12 volt emergency operated power
- Manual bleed down valve
- Engine anti-restart
- Oil level/temp gauges
- Driveable at full height
- Tilt alarm
- 125 volt GFCI AC outlet
- Aluminum upper booms
- Hour meter
- High engine temp/low oil pressure shut down
- Tie down lug
- Lifting lug



DANGER: Models described in this brochure are NON-INSULATED and do not provide electrocution protection from contact with or close proximity to energized conductors which is pointed out on decals and placards attached to the machine.

Only qualified and trained operators are to be authorized to use and operate a work platform. Aerial work platforms must be elevated only on firm, level surface. Products in this brochure comply with applicable ANSI Standards.

This literature is for illustrative purposes only. Consult Operating Maintenance and Parts Manuals for proper procedures. Specifications may vary and are subject to change without notice or obligation.

Snorkel

An ISO 9001 Registered Company
 Printed in U.S.A. TB60 2-01

Corporate U.S.A.
 P.O. Box 1160
 St. Joseph, MO 64502-1160
 800-255-0317 toll free
 816-364-0317 Office
 816-364-0380 Fax

England
 Unit 30, Whitehill Industrial Estate
 Whitehill Lane, Wootton Bassett
 Wiltshire SN4 7SB, England
 +44 1793 849905 tel
 +44 1793 852918 fax

Australia
 26 Redfern Street
 Wetherill Park NSW
 2164 Australia
 (02) 9725 4000 tel
 (02) 9609 3057 fax