



ISOLI PNT 230



Truck mounted dual-pantograph / telescopic boom

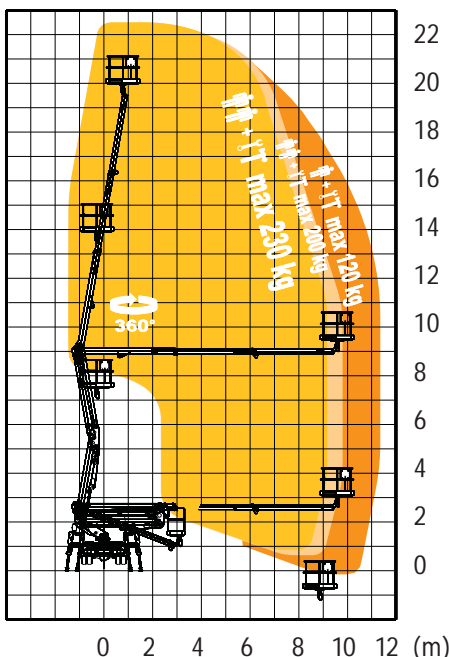
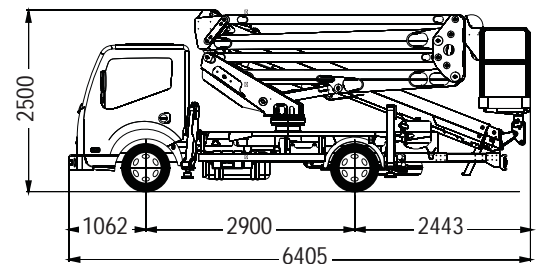
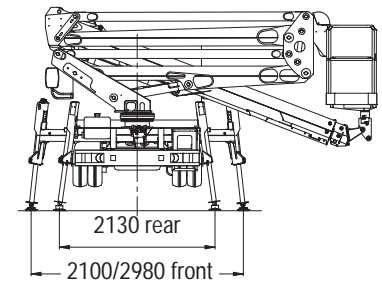
Specifications

Max. working height:	22.5m
Max. outreach, outriggers retracted:	6.1m @ 230kg / 9.2m @ 80kg
Max. outreach, outriggers extended:	9.1m @ 230kg / 11.3m @ 120kg
Platform type:	Tubular aluminium
Platform size:	1400mm x 710mm
Max platform capacity (SWL):	230kg (2 persons)
Boom configuration:	dual pantograph / 3-stage telescopic with moment sensing
Turret rotation:	550 degrees (non-continuous)
Platform rotation:	180 degrees
Controls:	Electric / hydraulic proportional
Chassis:	Nissan Cabstar 35.12
GVW:	3500kg
Wheelbase:	2900mm
Approx. kerb weight (no crew / fuel):	3450kg



Standard Equipment

- Dual controls, platform (proportional) and turret
- Aluminium tubular platform with slip-resistant floor
- Platform overload warning device
- Emergency lowering hand pump at ground
- Cab anti-collision restrictor with visual warning
- Four hydraulic outriggers, extending H-type
- Outrigger / boom safety interlock
- Outreach limit system dependent on outrigger position
- Engine stop/start at platform and ground
- Hour meter
- Aluminium tread-plate deck to steel subframe
- Mudguards & mudflaps
- Booms & turret painted white, subframe painted black, aluminium parts self-colour
- CE approved



Leewood Business Park
 Upton, Huntingdon. PE28 5YQ
 Tel: 01480 891581
 Fax: 01480 890191