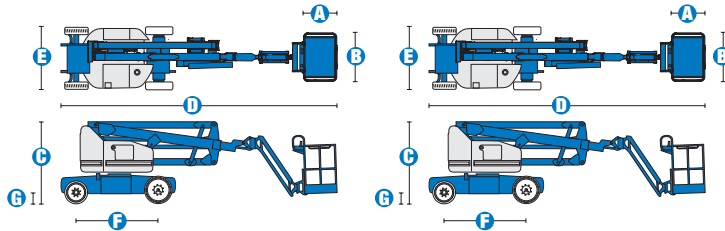


# SELF-PROPELLED ARTICULATING BOOMS

## Z™-40/23N & Z™-40/23N RJ

### Specifications



MODELS	Z™-40/23N		Z™-40/23N RJ	
MEASUREMENTS	Metric	US	Metric	US
Working height maximum*	14.32 m	46 ft 5 in	14.32 m	46 ft 5 in
Platform height maximum	12.32 m	40 ft 5 in	12.32 m	40 ft 5 in
Horizontal reach maximum	6.91 m	22 ft 8 in	6.91 m	22 ft 8 in
Up and over clearance maximum	6.48 m	21 ft 3 in	6.48 m	21 ft 3 in
A Platform length	76 cm	2 ft 6 in	76 cm	2 ft 6 in
B Platform width	1.42m	4 ft 8 in	1.17 m	3 ft 10 in
C Height - stowed	1.98 m	6 ft 6 in	1.98 m	6 ft 6 in
D Length - stowed	6.53 m	21 ft 5 in	6.53 m	21 ft 5 in
E Width	1.50 m	4 ft 11 in	1.50 m	4 ft 11 in
F Wheelbase	1.96 m	6 ft 5 in	1.96 m	6 ft 5 in
G Ground clearance - centre	18 cm	7 in	18 cm	7 in

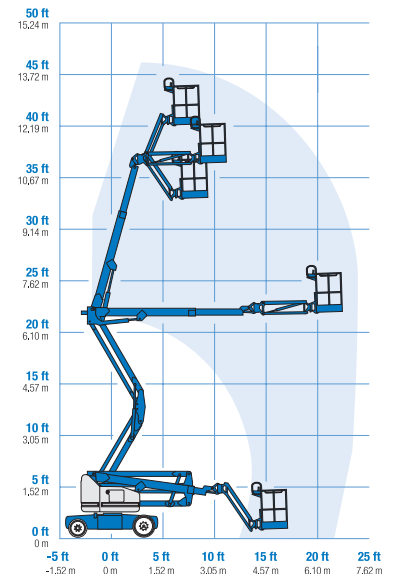
PRODUCTIVITY				
Lift capacity	227 kg	500 lbs	227 kg	500 lbs
Platform rotation	180°	180°	180°	180°
Vertical jib rotation	130°	130°	130°	130°
Horizontal jib rotation	—	—	180°	180°
Turntable rotation	355° non-continuous		355° non-continuous	
Turntable tailswing	13 cm	5 in	13 cm	5 in
Drive speed - stowed	7.2 km/h	4.5 mph	7.2 km/h	4.5 mph
Drive speed - raised**	1.1 km/h	0.68 mph	1.1 km/h	0.68 mph
Gradeability - stowed***	30%	30%	30%	30%
Turning radius - inside	87 cm	2 ft 11 in	87 cm	2 ft 11 in
Turning radius - outside	3.20 m	10 ft 6 in	3.20 m	10 ft 6 in
Controls	24 V DC proportional		24 V DC proportional	
Tyres - front	.56x.18x.45 m	22x7x17.75 in	.56x.18x.45 m	22x7x17.75 in
Tyres - rear	.64 x .18 m	25.6 x 7 in	.64 x .18m	25.6 x 7 in

POWER				
Power source	48 V DC (eight 6 V batteries) 350 Ah capacity		48 V DC (eight 6 V batteries) 350 Ah capacity	
Drive system	29 V 3 phase AC		29 V 3 phase AC	
Auxiliary power unit	24 V DC		24 V DC	
Hydraulic tank capacity	30.2 L	8 gal	30.2 L	8 gal

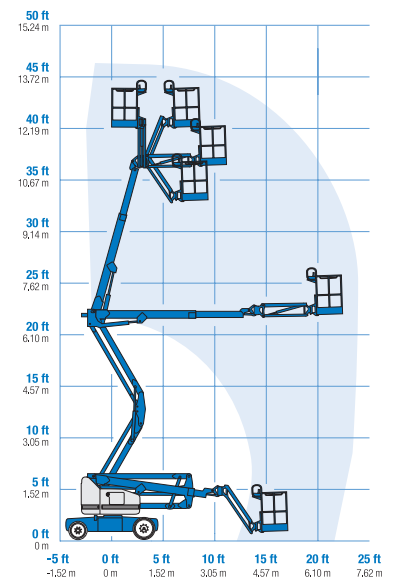
WEIGHT***	6,908 kg	15,230 lbs	6,940 kg	15,300 lbs
-----------	----------	------------	----------	------------

STANDARDS COMPLIANCE	CE EN280
----------------------	----------

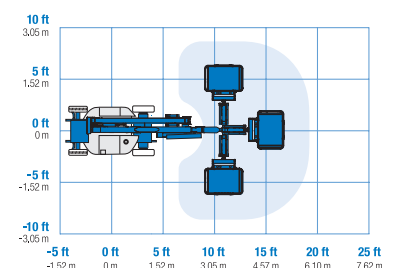
### RANGE OF MOTION Z™-40/23N



### RANGE OF MOTION Z™-40/23N RJ



### JIB RANGE OF MOTION Z™-40/23N RJ



\* The metric equivalent of working height adds 2 m to platform height. U.S. adds 6 ft to platform height.  
 \*\* In lift mode \*(platform raised), the machine is designed to operate on firm, level surfaces only.  
 \*\*\* Gradeability applies to driving on slopes. See operator's manual for details regarding slope ratings.  
 \*\*\*\* Weight will vary depending on options and/or country standards.

## Features

### EASILY CONFIGURED TO MEET YOUR NEEDS

#### PLATFORM OPTIONS

- Steel 1.42 m (4 ft 8 in) (Z40N only)
- Steel 1.17 m (3 ft 10 in) (Standard on Z40N RJ, option on Z40N)

#### JIB OPTIONS

- 1.22 m (4 ft) jib boom
- 1.22 m (4 ft) horizontal rotating jib boom

#### POWER

- 48 V DC (eight 6 V 350 Ah batteries)

#### BATTERY CHARGING

- 25 Amp 48 V DC onboard charger

#### TYRE

- Solid rubber non-marking

### STANDARD FEATURES

#### MEASUREMENTS

##### Z™-40/23N & Z™-40/23N RJ

- 14.32 m (46 ft 5 in) working height
- 6.91 m (22 ft 8 in) horizontal reach
- 6.48 m (21 ft 3 in) up and over clearance
- Up to 227 kg (500 lb) lift capacity

#### PRODUCTIVITY

- 1.50 m (4 ft 11 in) width
- 87 cm (2 ft 11 in) inside turning radius
- 1.22 m (4 ft) jib boom with 130° working range
- Self-levelling platform
- Hydraulic platform rotation
- Fully proportional controls
- Thumb rocker steer
- Drive enable
- AC power cord to platform
- Horn
- Hour meter
- Tilt alarm
- Descent alarm
- Hydraulic filter condition monitor
- 355° non-continuous turntable rotation
- Variable speed high efficiency hydraulic power unit

### STANDARD FEATURES

#### PRODUCTIVITY

- AC electric drive system
- Traction control
- On-board easy to understand diagnostics
- Certified load sensor

#### POWER

- 48 V DC deep cycle battery pack
- 24 V DC auxiliary power
- Universal 30A battery smart charger
- Battery charge indicator
- Low battery voltage interrupt



### OPTIONS & ACCESSORIES

#### PRODUCTIVITY

- Platform swing gate
- Half-mesh platform inserts with swing gate
- Air line to platform
- Fire resistant hydraulic oil
- Biodegradable hydraulic oil
- Hostile environment package
- Tool tray
- Fluorescent tube caddy
- Pipe cradle (pair)
- Alarm package (flashing beacon and travel alarm)
- Platform work lights
- Lockable platform control box cover

#### UK

The Maltings  
Wharf Road  
Grantham NG31 6BH  
UK  
Tel: +44 (0)1476 584333  
Fax: +44 (0)1476 584334

#### France

10, ZA de la Croix St. Mathieu  
28320 Gallardon  
France  
Tel: +33 (0)2 37 26 09 99  
Fax: +33 (0)2 37 26 09 98

#### Germany

Finienweg 3  
28832 Achim/Bremen  
Germany  
Tel: +49 (0)4202 8852-0  
Fax: +49 (0)4202 8852-25

#### Spain

Gaià 31, Pol. Ind. Plá d'en Coll  
08110 Montcada i Reixac  
Barcelona  
Spain  
Tel: +34 93 572 50 90  
Fax: +34 93 572 50 91

#### Scandinavia

Aröds industriväg 34  
422 43 Hisings Backa  
Sweden  
Tel: +46 31 57 51 00  
Fax: +46 31 57 51 04

#### Middle East

Terex Middle East  
PO Box 282325, Dubai  
U.A.E.  
Tel: +971 4 885 8030  
Fax: +971 4 885 6364  
Email: awp.infome@terex.com

#### Genie United States

18340 NE 76th Street  
P.O. Box 97030  
Redmond, WA  
USA 98073-9730  
Tel: +1 425 881-1800  
Fax: +1 425 883-3475

**Email:** AWP-InfoEurope@terex.com

**Distributed By:**