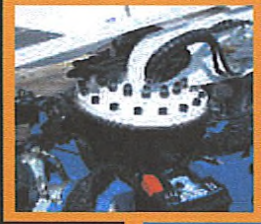


*R 150*

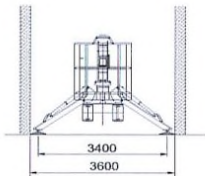
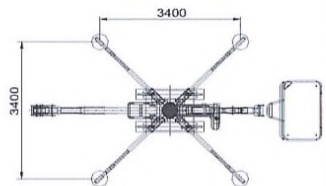
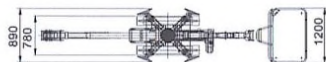
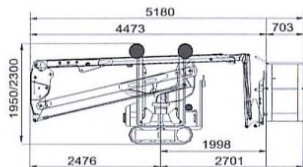


**RAGNO  
SPIDER**

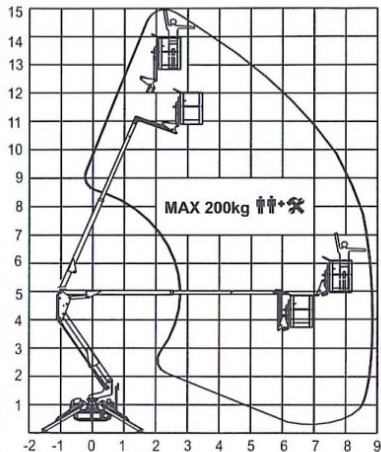


 **URBAN-ACCESS**  
SPECIALIST ACCESS PLATFORM HIRE AND SALES

.co.uk



<ul style="list-style-type: none"> <li>-Altezza massima di lavoro</li> <li>-Straccio massimo di lavoro</li> <li>-Rotazione torretta</li> <li>-Portata massima</li> <li>-Movimenti idraulici proporzionali</li> <li>-Massa totale</li> <li>-Pendenza superabile</li> <li>-Dim. cestello</li> </ul>	<ul style="list-style-type: none"> <li>15.20 m</li> <li>9.00 m</li> <li>350° non continuo</li> <li>200 kg</li> <li>1900 kg</li> <li>25%</li> <li>1,2 x 0,6 m</li> </ul>
<ul style="list-style-type: none"> <li>-Max.working height</li> <li>-Max.working outreach</li> <li>-Turret rotation</li> <li>-Max.capacity</li> <li>-Proportional hydraulic controls</li> <li>-Total weight</li> <li>-Gradeability</li> <li>-Basket dimension</li> </ul>	<ul style="list-style-type: none"> <li>15.20 m</li> <li>9.00 m</li> <li>350° not continuous</li> <li>200 kg</li> <li>1900 kg</li> <li>25%</li> <li>1,2 x 0,6 m</li> </ul>
<ul style="list-style-type: none"> <li>-Altura de trabajo</li> <li>-Alcance lateral máx</li> <li>-Giro de la torre</li> <li>-Carga max en plataforma</li> <li>-Mandos proporcionales</li> <li>-Peso total</li> <li>-Pendiente máx</li> <li>-Dimensiones de plataforma</li> </ul>	<ul style="list-style-type: none"> <li>15.20 m</li> <li>9.00 m</li> <li>350° no continuo</li> <li>200 Kg</li> <li>1900 Kg</li> <li>25%</li> <li>1,2 x 0,6 m</li> </ul>
<ul style="list-style-type: none"> <li>-Hauteur de travail</li> <li>-Déport max laterale</li> <li>-Rotation tourelle</li> <li>-Max charge dans le panier</li> <li>-Commandes proportionnelles</li> <li>-Poids total</li> <li>-Max pente admissible</li> <li>-Dimensions panier</li> </ul>	<ul style="list-style-type: none"> <li>15.20 m</li> <li>9.00 m</li> <li>350° non continuus</li> <li>200 Kg</li> <li>1900 Kg</li> <li>25%</li> <li>1,2 x 0,6 m</li> </ul>
<ul style="list-style-type: none"> <li>-Max. Arbeitshöhe</li> <li>-Max. Arbeitsauslegung</li> <li>-Drehturn rotation</li> <li>-Max. Tragkraft</li> <li>-Steuerungen hydraulische</li> <li>-Gewicht</li> <li>-Max. Steigfähigkeit</li> <li>-Korbabmess</li> </ul>	<ul style="list-style-type: none"> <li>15.20 m</li> <li>9.00 m</li> <li>350° no endios</li> <li>200 Kg</li> <li>1900 Kg</li> <li>25%</li> <li>1,2 x 0,6 m</li> </ul>



DISTRIBUTOR

