

LIFTING TECHNOLOGY
for Craftsmen & Industry



Aluminium
MATERIAL and MOUNTING LIFTS



Wienold

Product Catalogue
Norbert Wienold GmbH 2016



The Norbert Wienold GmbH was founded in 1987 and is General Distributor in Germany for:



Whether material lifts, or work platforms, scissors or booms: we offer a large range of lifting technology to you for many operational areas - up to 40 m working height.

At our headquarter in Emsbüren in Germany we employ approx. 25 co-workers, who all work together with the colleagues at our national offices to ensure fast problem free completion of your enquiries and orders.



Our services include among other things, sales, rentals, spare part service and repairs, as well as machine examinations.

To adapt your Lifting equipment for individual needs and work inputs we also offer a wide accessory program to you.

In order to guarantee short term supplies, we have many lifts, workplatforms, spare parts and accessories in stock. Therefore your order reaches you within the shortest time.

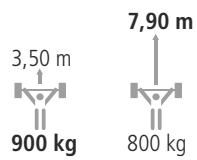


We will also help you with enquires for completely special single solutions in the lifting technology as well as briefings and training courses for our machines.

Fell welcome, **we be glad to help.**

Rental Stations in Germany:

München | Frankfurt | Leverkusen | Walsrode | Brandenburg | Emsbüren



GML800+
Glass & Material Lift

4



SLK
WIENOLD Superlift
with counterweights

10



WIENOLD Lift Universal
PREMIUM

12



WL-Std
WIENOLD Lift Standard

18



Panellift
Drz Wall Lifter

22



Accessories

24

Lifting height



Left icon describes **maximum Safe Working Load (SWL)** and lifting height.
Left icon describes **maximum Working Height** and Safe Working Load.

Wienold GML 800+

WIENOLD Glass & Material Lift



Wienold Glass- und Material Lift GML 800+ Powerful and versatile.



GML 800+ M
with manual worm gear winch



GML 800+ AC
with 230/110V electric winch



GML 800+ DC
with 24V electric winch

The new **GML800+** lift series redefines the handling of heavy loads in a completely new way. The range offers unparalleled safe working loads for material lifts of this type.

The GML range brings the new development of an **electric drive system**. Both AC and DC models have a powerful electric winch that allows 900 kg to be lifted to a height of 3.50 m and up to 800 kg to a height of 7.90 m at the touch of a button.

The Manual (M) model range has identical lifting and reach capabilities to the powered range. The worm gear winch comes complete with an adjustable crank handle which, when extended fully enables heavier loads to be lifted more easily.

A truly amazing accessory that can be fitted to the Manual range as an optional extra is a 3 speed gearbox which can be operated with a cordless or mains operated drill. This totally eliminates the need for manual winding which saves both time and effort.

The GML800+ AC and DC are operated by a simple wander lead that is magnetised for storage on any steel part of the machine.

The battery pack and counterbalance weights on the DC machine are stored in a self contained trolley that ingeniously attaches to the stabilising legs of the GML800+ and comes complete with an integrated, self seeking charger.

On both the AC and DC models, the cable control system is designed to allow the operation of additional powered accessories such as the electric telescopic boom (ETB).

Another innovative feature of the GML range is the option of forklift pockets which become invaluable when transporting the machine around a building site, especially in operating position.

Electric winch AC and DC series



Manual worm gear winch M series



Optional: 3 speed gearbox for Manual version



Wienold Glass- und Material Lift GML 800+

Safe lifting on wall and ceiling.



Adjustable stabilisers as standard for /20 und /25.
Optional für for /10 and /15 models.



Space-saving
Transport/storage position



Practical: forklift pockets
available as an option.

In order for the machines to operate safely with the extra lifting capacities, the mast system of the popular SLK range has been extensively redesigned.

Not only has the mast extrusion been made stronger, the rollers are manufactured from hardened steel to ensure smooth movement and stability. All pulleys, bearings and the steel cable have been engineered for durability and longevity.

The GML series incorporates twin safety brakes and on the electric models, two limit switches are fitted. These switches deactivate the winch automatically when full extension or retraction is reached. The winch also stops if the cable tension is insufficient.

Wienold Lift's high standard of engineering and safety extends to all components of the GML800+ range. The chassis frame, stabilising legs and outriggers are all manufactured from 6mm thick steel. All GMLs are fitted with locking castors which can be locked for in-line steering.

All GMLs are fitted with locking castors which can be locked for in-line steering

The GML800+ series is unique in that the stabilising legs can be used not only in the front of the machine, but can easily be installed at the back (with counterweights).

This enables the unit to work directly up against a wall or glass façade etc ensuring the load centre remains close to the mast. In addition, with the legs to the back the unit becomes easier to manoeuvre.

The GML800+ is available with a range of electrically operated accessories such as vacuum lifters and an electrically operated telescopic boom which enables precision placement of materials when working on site.

Mast system with special profiles and bearings



Heavy duty rollers, cable and components



Safety brakes fitted on both sides



AC series:



GML stands for Glass and Material Lift. The number **800** describes the safe working load (SWL) of the model with the largest working height. The **+** sign indicates that models with a higher SWL are available.

Example: GML800+ 20/K AC

Further numbers and letters identify the exact type:

The numbers 10, 15, **20** or 25 give you the approximate working height in feet of each model. The letter **K** tells you that the lift is a counterweight model and **AC** stands for the mast system drive which is operated by a 230v/110V electric winch.

The illustrated **GML800+ /20 K AC** achieves a lifting height of 6.50 m. It is supplied with adjustable stabilisers which are fitted as standard on the GML800+ 20 and 25 models.

The adjustable stabilisers provide a higher level of stability when working at greater heights and are available as an option on the GML800+ 10 and 15 models.

Adjustable forks are fitted as standard on all GML models with other load handling attachments available as accessories.

DC series:



Example: GML800+ 25/K DC

The DC models are supplied with a detachable, self contained trolley which houses the batteries, charger and counterweights. Attaching and detaching the battery trolley is simplicity itself. Just tilt the trolley backwards, push it on to the two slide-on guides on the stabilising legs and secure with the two locking pins.

We estimate that under normal working conditions a full charge should be sufficient for a standard working days operation.

Obviously factors such as weight and lift cycles come into play however, it is possible to charge the batteries whilst the lift is in operation. The battery pack is fitted with a battery condition indicator and the charger is self seeking either 110v or 230v.

M series



Example: GML800+ 10/Std M

Std stand for 'standard' which indicates a model without counterweights (stabilising legs forward facing). The M stands for manual winch. The 10 is the smallest model in the GML range with the highest safe working load of 900 kg up to 3.50 m.

The length of the handle can be increased to make lifting heavier loads easier.

Systematic working - the Wienold GML makes it possible!

Wienold Glass- und Material Lift GML 800+

Powerful and versatile.



The GML800+ is designed with several variants for maximum versatility.

Two set up options:

1. **Std:** Standard model
Forward facing stabilising legs. No counterweights required.
2. **K:** Counterweight model
Stabilising legs positioned at the back. Counterweights required.
Using stabilising legs forward facing is also possible.

Three drive variants:

1. **AC:** mains operated electric winch ~230/110V
2. **DC:** battery operated electric winch 24V
3. **M:** manual worm gear

Four lifting heights:

1. **10s:** 3,50 m lifting height with 900 kg SWL.
2. **15s:** 5,00 m lifting height with 850 kg SWL.
3. **20s:** 6,50 m lifting height with 850 kg SWL.
4. **25s:** 7,90 m lifting height with 800 kg SWL.

A variety of accessories are available to complement the GML range.

The powered units can operate glass manipulators, telescopic booms and winches. By using the gearbox the which can be operated with a Cordless screwdriver or drill if a manual GML is being used.

Adjustable crane booms, fork extensions and adjustable pallet forks (short and long) are other options available.

The GML800+ offers exceptional safe working loads at a range of heights and enables comfortable, effortless, precise, quick and safe operation.



M series (manual worm gear winch)	GML800+/10/M	GML800+/15/M	GML800+/20/M	GML800+/25/M
Lifting height - Standard forks up:	3.50 m	5,00 m	6.50 m	7.90 m
Transport position - Height/Length/Width:	1.98/1.00/0.78 m	1.98/1.00/0.78 m	1.98/1.00/0.78 m	1.98/1.00/0.78 m
Working position - Height/Length/Width:	1.98/1.94*/0.78 m	1.98/1.94*/0.78 m	1.98/1.94*/0.78 m	1.98/1.94*/0.78 m
Safe working load (Load centre at 28 cm)**:	900 kg	850 kg	850 kg	800 kg
Weight of chassis + outrigger:	237 kg	260 kg	293 kg	316 kg
Weight of counterweights + box:	207 kg	207 kg	207 kg	207 kg

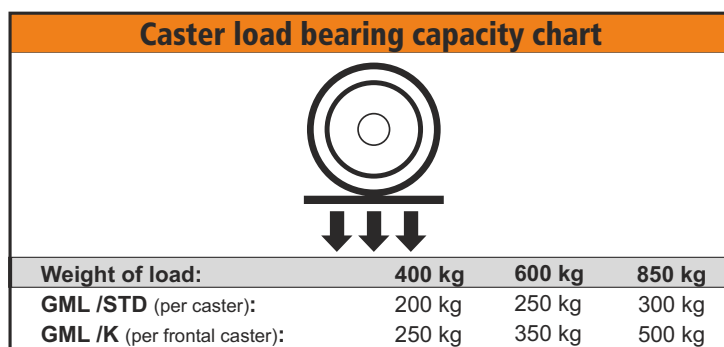
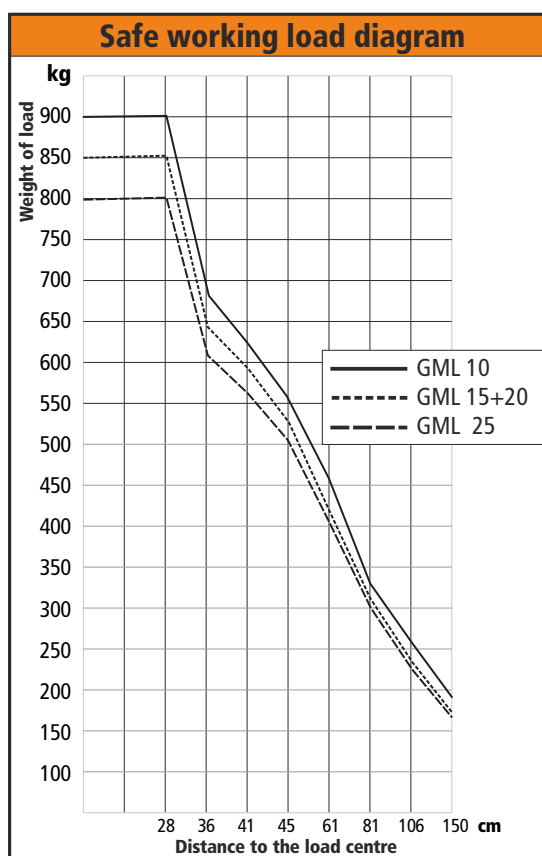
* Stabilising legs positioned at the back. Stabilising legs forward facing: 1.99 m ** Without loading accessory.

AC series (~230V)	GML800+/10/AC	GML800+/15/AC	GML800+/20/AC	GML800+/25AC
Lifting height - Standard forks up:	3,50 m	5,00 m	6,50 m	7,90 m
Transport position - Height/Length/Width:	1,98/1,00/0,78 m	1,98/1,00/0,78 m	1,98/1,00/0,78 m	1,98/1,00/0,78 m
Working position - Height/Length/Width:	1,98/1,94*/0,78 m	1,98/1,94*/0,78 m	1,98/1,94*/0,78 m	1,98/1,94*/0,78 m
Safe working load (Load centre at 28 cm)**:	900 kg	850 kg	850 kg	800 kg
Weight of chassis + outrigger:	273 kg	296 kg	329 kg	352 kg
Weight of counterweights + box:	207 kg	207 kg	207 kg	207 kg
Drive: AC	Electric Winch: ~230 V / 110 V			

* Stabilising legs positioned at the back. Stabilising legs forward facing: 1.99 m ** Without loading accessory.

DC series (24V7Batteries)	GML800+/10/DC	GML800+/15/DC	GML800+/20/DC	GML800+/25DC
Lifting height - Standard forks up:	3,50 m	5,00 m	6,50 m	7,90 m
Transport position - Height/Length/Width:	1,98/1,00/0,78 m	1,98/1,00/0,78 m	1,98/1,00/0,78 m	1,98/1,00/0,78 m
Working position - Height/Length/Width:	1,98/1,94*/0,78 m	1,98/1,94*/0,78 m	1,98/1,94*/0,78 m	1,98/1,94*/0,78 m
Safe working load (Load centre at 28 cm)**:	900 kg	850 kg	850 kg	800 kg
Weight of chassis + outrigger:	273 kg	296 kg	329 kg	352 kg
Weight of battery wagon (counterweights incl.):	213 kg	213 kg	213 kg	213 kg
Drive: DC	2x 12 V / 105 AH. Charger: ~230V /110V			

* Stabilising legs positioned at the back. Stabilising legs forward facing: 1.99 m ** Without loading accessory.



Load centre chart

	28 cm	36 cm	41 cm	45 cm	61 cm	81 cm	106 cm	150 cm
GML 10	900 kg	684 kg	629 kg	566 kg	452 kg	334 kg	253 kg	189 kg
GML 15	850 kg	646 kg	594 kg	534 kg	427 kg	315 kg	239 kg	179 kg
GML 20	850 kg	608 kg	561 kg	507 kg	407 kg	300 kg	230 kg	171 kg
GML 25	800 kg	608 kg	561 kg	507 kg	407 kg	300 kg	230 kg	171 kg