

Specifications

| Model | TZ-50 | |
|---------------------------------------|---------|-------------|
| Measurements | Metric | US |
| Working height* | 17.09 m | 55 ft 6 in |
| Platform height | 15.09 m | 49 ft 6 in |
| Entry height | 0.51 m | 1 ft 8 in |
| Horizontal reach | 8.89 m | 29 ft 2 in |
| Clear outreach | 7.04 m | 23 ft 1 in |
| Up and over clearance | 6.71 m | 22 ft |
| A Platform length | 0.68 m | 2 ft 2.8 in |
| B Platform width | 1.12 m | 3 ft 8 in |
| C Height - stowed | 2 m | 6 ft 10 in |
| D Length - stowed | 7.16 m | 23 ft 6 in |
| E Width - stowed | 1.68 m | 5 ft 6 in |
| F Ground clearance - center | 0.25 m | 10 in |
| G Length - outrigger footprint | 4.37 m | 14 ft 4 in |
| H Width - outrigger footprint | 4.37 m | 14 ft 4 in |

Productivity

| | | |
|-----------------------------------|---------------------------------------|-----------|
| Lift capacity - standard | 200 kg | 440 lbs |
| Lift capacity - rotating platform | 200 kg | 440 lbs |
| Jib boom | 1.25 m | 4 ft 1 in |
| Jib working range | 135° | 135° |
| Self leveling platform | 2.5° standard | |
| Platform rotation option | 160° hydraulic | |
| AC power to platform | standard | |
| Turntable rotation | 359° non-continuous | |
| Outrigger leveling capability | 10° | |
| Drive speed | 1.37 km/h | 0.85 mph |
| Gradeability** | 20% | |
| Towing speed rate | 97 km/h | 60 mph |
| Tongue weight - CE*** | 100 kg | 220 lbs |
| Surge and parking brakes | standard | |
| Controls | variable speed system | |
| Tyre size | 215 R14C | |
| Coupler | 5.08 cm (2 in) hitch coupler standard | |

Power

| | |
|-----------------------------|-------------------------------------|
| Power source - standard | 24V DC (four 6V 225 Ah batteries) |
| Power source - drive option | 24V DC (four 6V 244 Ah batteries) |
| Power source - option | Hybrid DC/Gas Honda 4.1 kW (5.5 hp) |
| Fuel tank capacity | 3.6 L 0.95 gal |
| Hydraulic tank capacity | 18 L 4.75 gal |
| Hydraulic system capacity | 30 L 8.0 gal |

Sound & Vibration Levels

| | | |
|---|-----------------------|---------------------------|
| Sound pressure level (ground workstation) | <70 dBA | <70 dBA |
| Sound pressure level (platform workstation) | <70 dBA | <70 dBA |
| Vibration | <2.5 m/s ² | <8 ft 2 in/s ² |

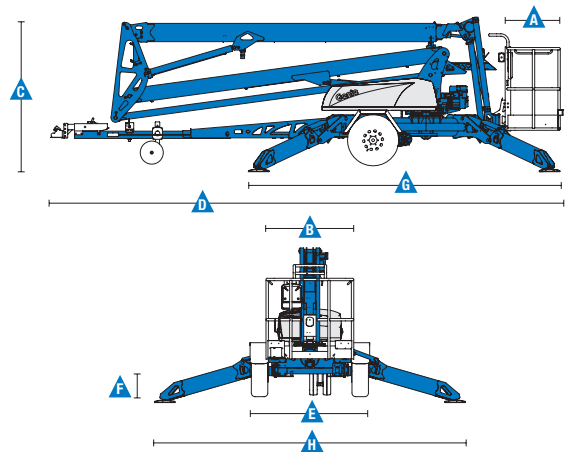
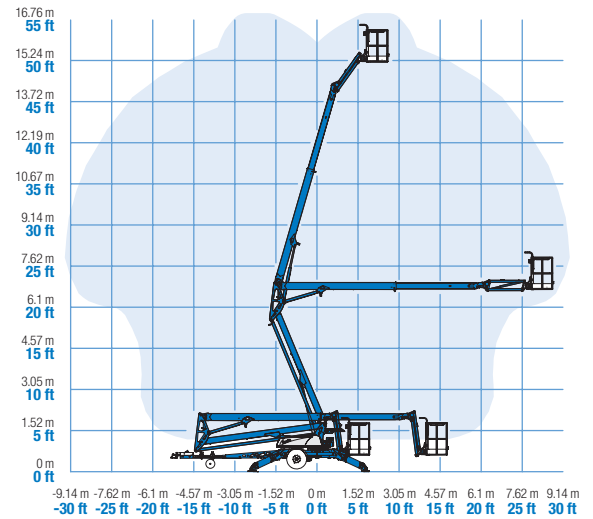
Weight***

| | | |
|--|------------|-------------|
| Weight CE | 2,025 kg | 4,464 lbs |
| Unit weight modifiers for main options | | |
| Platform rotation: | add 10 kg | add 23 lbs |
| Drive option: | add 105 kg | add 231 lbs |
| Bicycle guard: | add 15 kg | add 32 lbs |
| Full size spare tyre: | add 27 kg | add 60 lbs |
| Hybrid engine: | add 45 kg | add 100 lbs |

Standards Compliance

EU Directives: 2006/42/EC - Machinery (harmonized standard EN280:2001+A2:2009); 2004/108/EC (EMC); 2006/95/EC (LVD); 2000/14/EC (Outdoor Noise)

Range Of Motion TZ-50



* The metric equivalent of working height adds 2 m to platform height. U.S. adds 6 ft to platform height.

** Gradeability applies to driving on slopes. See operator's manual for details regarding slope ratings.

*** Weight will vary depending on options and/or country standards.

Features

| Standard Features | Easily Configured To Meet Your Needs | Options & Accessories |
|-------------------|--------------------------------------|-----------------------|
|-------------------|--------------------------------------|-----------------------|

Measurements

- 17.09 m (55 ft 6 in) working height
- 29 ft 2 in (8.89 m) horizontal reach
- Up to 227 kg (500 lbs) lift capacity

Productivity

- Industry leading working envelope
- Extension boom
- Self-levelling platform
- 1.25 m (4 ft) jib with 135° working range
- AC wiring to platform
- Hydraulic outriggers
- Automatic 10° levelling system
- Outrigger interlocks
- Mechanical parking brake
- Hydraulic surge brakes
- Auxilliary pump down
- 5.08 cm (2 in) ball coupler
- Combination hitch with coupler lever lock
- Dual jockey wheels
- 359° non-continuous turntable rot:
- Easy to access batteries
- Hour meter
- Tilt alarm / sensor
- Forklift pockets
- Illuminated outrigger indicators
- Wheel chocks
- Spare tyre
- Battery charge indicator (BCI)
- Ladder
- Certified load sensor

Power

- 24V DC power source (four 6V 225 Ah batteries)

Platform Options

- Aluminum 0.68 x 1.12 m (26.8 x 44 in)
- 160° hydraulic platform rotation ⁽¹⁾

Power Options

- 24V DC power source
- Hybrid Honda 4.1 Kw (5.5 Hp) 45 amp charging system

Drive

- Drive option

Coupler

- 5.08 cm (2 in) ball coupler

Tyres

- 215 R14C tyres

Productivity

- Power to platform (incl. plug, socket and ground fault interrupt leakage on request)
- Track & Trace ⁽²⁾ (GPS unit providing machine location & operating information)
- Low temperature cut-out module
- Drive option with high capacity 244 Ah batteries pack
- Non-marking outrigger footpads
- Bicycle guard ⁽³⁾
- Horn
- Flashing Beacon

Power

- Hybrid Honda 4.1 Kw (5.5 Hp) 45 amp charging system option



⁽¹⁾ Factory-fit option only

⁽²⁾ Includes a first 2 years subscription

⁽³⁾ Mandatory for France, Denmark, Netherlands

United Kingdom

The Maltings, Wharf Road, Grantham NG31 6BH, T: +44 800 988 3739 (toll free), Fax +44 (0)1476 584334, Email AWP-InfoEurope@terex.com
Visit www.genielift.co.uk/locations to view our global locations list.

Worldwide Manufacturing And Distribution

Australia • Brazil • Caribbean • Central America • China • France • Germany • Italy • Japan • Korea • Mexico • Russia • Southeast Asia • Spain • Sweden • United Arab Emirates • United Kingdom • United States

Effective Date: October, 2012. Product specifications and prices are subject to change without notice or obligation. The photographs and/or drawings in this document are for illustrative purposes only. Refer to the appropriate Operator's Manual for instructions on the proper use of this equipment. Failure to follow the appropriate Operator's Manual when using our equipment to do otherwise act irresponsibly may result in serious injury or death. The only warranty applicable to our equipment is the standard written warranty applicable to the particular product and sale and we make no other warranty, express or implied. Products and services listed may be trademarks, service marks or trade names of Terex Corporation and/or their subsidiaries in the USA and many other countries. Genie is a registered trademark of Terex South Dakota, Inc. © 2012 Terex Corporation.

