

Specifications

Models	S-100		S-105	
	Metric	US	Metric	US
Working height maximum*	32.48 m	106 ft	34.00 m	111 ft
Platform height maximum	30.48 m	100 ft	32.00 m	105 ft
Horizontal reach maximum	22.86 m	75 ft	24.38 m	80 ft
Below ground reach	1.98 m	6 ft 6 in	3.05 m	10 ft
▲ Platform length - 8 ft model	0.91 m	3 ft	0.91 m	3 ft
▲ Platform length - 6 ft model	0.76 m	2 ft 6 in	0.76 m	2 ft 6 in
▲ Platform width - 8 ft model	2.44 m	8 ft	2.44 m	8 ft
▲ Platform width - 6 ft model	1.83 m	6 ft	1.83 m	6 ft
▲ Height - stowed	3.07 m	10 ft 1 in	3.07 m	10 ft 1 in
▲ Length - stowed	13.00 m	42 ft 8 in	14.02 m	46 ft
▲ Length - transport (jib tucked under)	—	—	12.17 m	39 ft 11 in
▲ Width - axle retracted	2.49 m	8 ft 2 in	2.49 m	8 ft 2 in
▲ Width - axle extended	3.35 m	11 ft	3.35 m	11 ft
▲ Wheelbase	3.66 m	12 ft	3.66 m	12 ft
▲ Ground clearance - center	0.44 m	1 ft 5.5 in	0.44 m	1 ft 5.5 in

Productivity

Lift capacity	340 kg	750 lbs	227 kg	500 lbs
Platform rotation	160°		160°	
Vertical jib rotation	—		135° (+78°/-57°)	
Turntable rotation	360° continuous		360° continuous	
Turntable tailswing - axle retracted	1.68 m	5 ft 6 in	1.68 m	5 ft 6 in
Turntable tailswing - axle extended	1.22 m	4 ft	1.22 m	4 ft
Drive speed - stowed	4.8 km/h	3.0 mph	4.8 km/h	3.0 mph
Drive speed - raised or extended below 80 ft	1.1 km/h	0.68 mph	1.1 km/h	0.68 mph
Drive speed - raised or extended above 80 ft	0.55 km/h	0.34 mph	0.55 km/h	0.34 mph
Gradeability - stowed**	40%		40%	
Turning radius - axles retracted: inside	4.14 m	13 ft 7 in	4.14 m	13 ft 7 in
Turning radius - axles retracted: outside	6.58 m	21 ft 7 in	6.58 m	21 ft 7 in
Turning radius - axles extended: inside	2.74 m	9 ft	2.74 m	9 ft
Turning radius - axles extended: outside	6.05 m	19 ft 10 in	6.05 m <td 19 ft 10 in	
Controls	12 V DC proportional		12 V DC proportional	
Tyres - RT foam filled	385/65D 22.5		385/65D 22.5	

Power

Power Source	Deutz TD 2011 L04i 4-cylinder turbo diesel, 55 kW (74 hp) Perkins 804-33T 4-cylinder turbo diesel, 55 kW (74 hp)			
Auxiliary Power Unit	12 V DC		12 V DC	
Hydraulic Tank Capacity	208 L	55 gal	208 L	55 gal
Fuel Tank Capacity	151 L	40 gal	151 L	40 gal

Sound & Vibration Levels

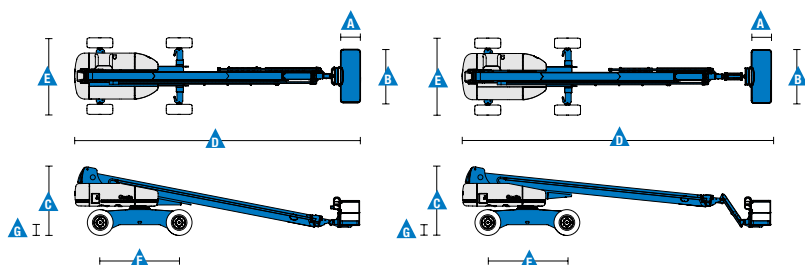
Sound pressure level (ground workstation)	85 dBA	85 dBA	85 dBA	85 dBA
Sound pressure level (platform workstation)	74 dBA	74 dBA	74 dBA	74 dBA
Vibration	<2.5 m/s ²	<8 ft 2 in/s ²	<2.5 m/s ²	<8 ft 2 in/s ²

Weight***

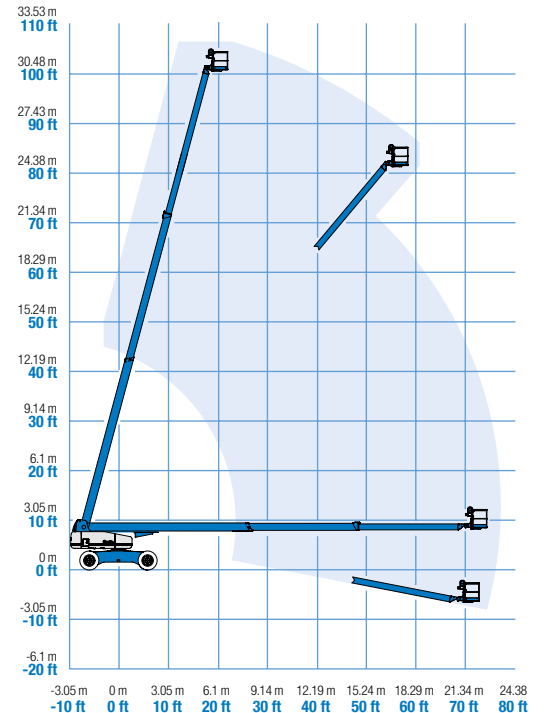
4WD	18,008 kg	39,700 lbs	18,144 kg	40,000 lbs
-----	-----------	------------	-----------	------------

Standards Compliance

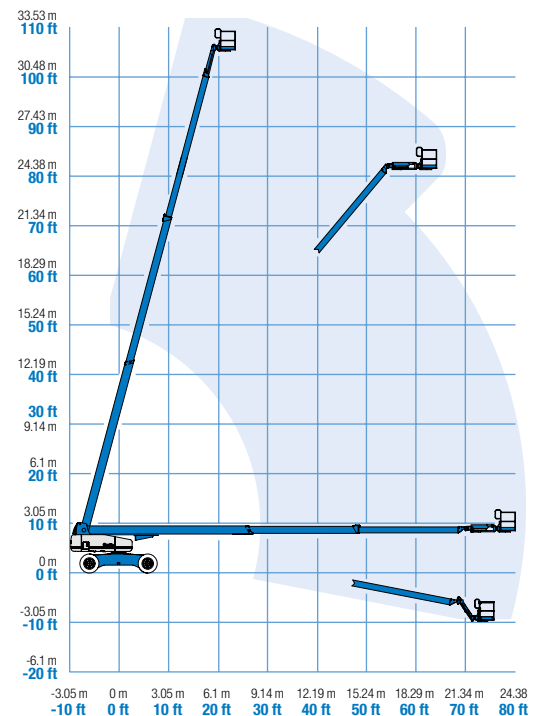
EU Directives: 2006/42/EC - Machinery (harmonized standard EN280:2013); 2004/108/EC (EMC); 2000/14/EC (Outdoor Noise)



Range Of Motion S-100



Range Of Motion S-105



* The metric equivalent of working height adds 2 m to platform height. U.S. adds 6 ft to platform height.

** Gradeability applies to driving on slopes. See operator's manual for details regarding slope ratings.

*** Weight will vary depending on options and/or country standards.

Features

Standard Features	Easily Configured To Meet Your Needs	Options & Accessories
-------------------	--------------------------------------	-----------------------

Measurements

S-100

- 32.48 m (106 ft) working height
- 22.86 m (75 ft) horizontal reach
- 340 kg (750 lb) lift capacity

S-105

- 34.00 m (111 ft) working height
- 24.38 m (80 ft) horizontal reach
- 227 kg (500 lb) lift capacity

Productivity

- Self-levelling platform
- Hydraulic platform rotation
- Thumb rocker steering
- Two work lights on platform
- Proportional joystick controls
- Hydraulic oil cooler
- Drive enable system
- AC power cord to platform
- Horn
- Hour meter
- Tilt alarm
- Descent motion & travel alarms
- Flashing beacon
- 360° continuous turntable rotation
- Lockable platform control box covers
- Positive traction drive
- Two speed wheel motors
- Configurable controls to limit lift height to 24.38 m (80 ft)
- Engine status display
- Certified load sensor
- Air line to platform
- Telematics-Ready Connector

Power

- All engines are emissions compliant
- 12 V DC auxiliary power
- Anti-restart engine protection
- Auto engine fault shutdown
- Intake air heater (Deutz engine)

Platform Options

- Steel 2.44 m (8 ft) (standard)
- Steel 1.83 m (6 ft)
- Steel 2.44 m (8 ft) tri-entry

Jib Options

- Non-jib
- 1.52 m (5 ft) articulating jib boom

Engine Options

- Deutz diesel 55 kW (74 hp)
- Perkins diesel 55 kW (74 hp)

Drive/Steer

- 4 x 4 (standard)
- 4 wheel steer (standard)

Axle

- Extendable axles (standard)

Tyres

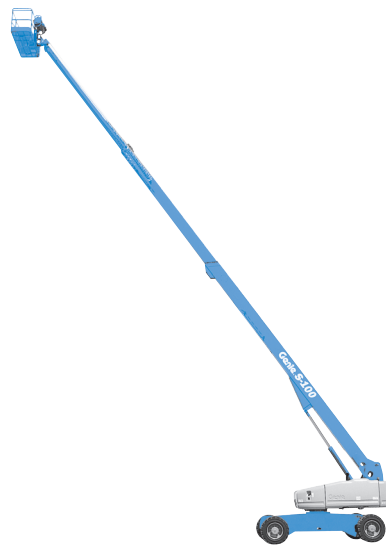
- Rough terrain foam-filled (standard - water base)

Productivity Options

- Platform top auxiliary rail
- Power to platform (incl. plug, socket and ground fault interrupt leakage on request)
- Dual axis joystick steering
- Biodegradable hydraulic oil ⁽²⁾
- Deluxe hostile environment kit ⁽²⁾: hostile environment kit, center turntable shield, ring gear guard, tail pipe guard, engine cover flaps and air pre-cleaner
- Aircraft protection kit ^(1,4): platform foam padding and padded disable system
- Track & Trace ⁽³⁾ (GPS unit providing machine location & operating information)
- Tool tray
- Operator Protective Structure
- Operator Protective Alarm
- Keypad unlocking device

Power Options

- Hydraulic MTE Generator kit (110V/120V-220V/240V)
- Deutz V-Belt Generator kit (110V/120V) ⁽⁴⁾
- Diesel catalytic scrubber muffler ⁽²⁾
- Diesel air intake pre-cleaner ⁽²⁾
- Low temperature cut-out module
- Engine heater option ⁽⁴⁾
- Refinery kit with spark arrestor and electric or mechanical Chalmers valve ⁽⁴⁾



⁽¹⁾ Not available on tri-entry platforms

⁽²⁾ Factory-fit option only

⁽³⁾ Includes a first 2 years subscription

⁽⁴⁾ Available on selected models only. See your Genie representative for further information.



Access Platform Sales

Leewood Business Park, Upton, Huntingdon, Cambridgeshire PE28 5YQ, United Kingdom. Tel: 0845 108 4000 Fax: 01480 891162 Email: sales@iapsgroup.com www.iapsgroup.com

Worldwide Manufacturing And Distribution

Australia · Brazil · Caribbean · Central America · China · France · Germany · Italy · Japan · Korea · Mexico · Russia · Southeast Asia · Spain · Sweden · United Arab Emirates · United Kingdom · United States

Product specifications and prices are subject to change without notice or obligation. The photographs and/or drawings in this document are for illustrative purposes only. Refer to the appropriate Operator's Manual for instructions on the proper use of this equipment. Failure to follow the appropriate Operator's Manual when using our equipment or to otherwise act irresponsibly may result in serious injury or death. The only warranty applicable to our equipment is the standard written warranty applicable to the particular product and sale and we make no other warranty, express or implied. Products and services listed maybe trademarks, service marks or trade names of Terex Corporation and/or their subsidiaries in the USA and many other countries. Genie is a registered trademark of Terex South Dakota, Inc. © 2015 Terex Corporation.