

www.hinowa.com

# Hinowa®

*Distinctive features*

# GOLDLIFT 17.80XL TTS

**Self-stabilizing  
and destabilizing  
system**

**Radio control!**

**New!**



**Delivery Autumn 2010**



Hinowa engineers team made every effort to create a spider lift technologically advanced keeping at the same time the well-known philosophy of use of the **GoldLift 14.70**.

The goals were clear:  
 “increase the working performance, maximizing the safety level and keeping the simplicity of the existing machine, making it attractive to a wider range of users”

**IIS system:** the machine adopts the new IIS system, used on Light Lifts as well (Self-Stabilizing & Destabilizing system)



**How does it work?**

IIS system grants an automatic stabilization holding just a button (inclination of 11°). IIS system maintains the possibility to move manually every single stabilizer.

**Automatic destabilization?**

Yes, you understood that right. GoldLift 17.80XL is the only spider lift on the market which enables to destabilize automatically the four outriggers just pressing a button. This innovation, introduced on the complete Light Lift IIS line, simplifies users manoeuvres as the operation is completely automatic.

Therefore, the training for the operator will be very quick and intuitive.

Weight selection (120-200 kg) is also automatic, this means that the GoldLift will not allow overloads in the basket, stopping possible improper uses of the machine by the operator.

**Controls**

The controls of the aerial part, both on machine base and in basket, are hydraulic as in the Goldlift 14.70 and allow to control the Jib from the ground as well.

The **tracked undercarriage** is provided with a hydraulic system for undercarriage widening.

It is possible to increase the stability of the machine during translation just pressing a button.



HYDR. CONTROLS

### Remote control

GoldLift 17.80XL is equipped with a rechargeable Ni-Mh battery radio control, it operates: Tracks, self-stabilization and destabilization, motors ignition and stalling, movements speed adjustment, opening and closing of the undercarriage, emergency stop and service button

The **battery charger** of the remote control is aboard machine in a protected place, the remote control is equipped with 2 batteries and preserves the possibility to be connected to the GoldLift through cable and to be used as wire-control.

NEW RADIO CONTROL



INTERACTIVE DISPLAY

### Interactive display

The new remote control is equipped with an interactive display with self-diagnosis, breakdown notifications with operative indications to simplify the use of the machine and avoid machine downtimes.

### Motorization

The petrol motorization is with new Honda IGX390 – 13 HP engine, with rev electronic operation according to the movement chosen. Furthermore, the electric motor 230-110 Volt, 2,2 kW is current.

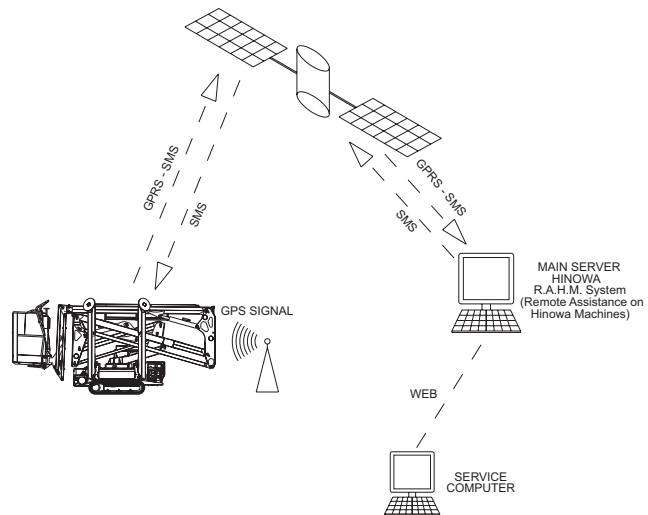
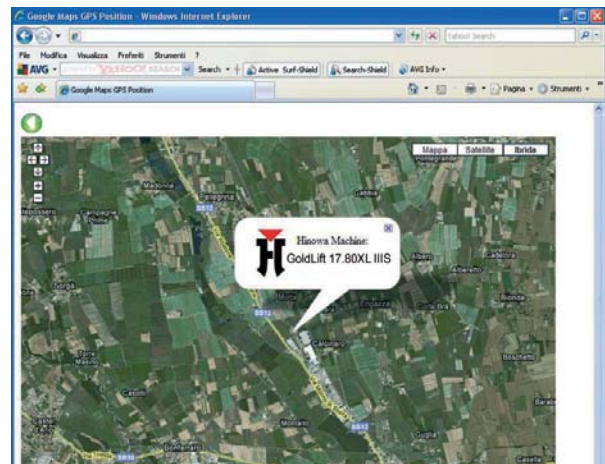
### Basket rotation

GoldLift 17.80XL III S platform is equipped with basket rotation hydraulic system (124°), which improves the performance at altitude.

### Visibility of the machine in R.A.H.M net

GoldLift 17.80XL III S offers a series of remote assistance possibilities. It includes a GPRS-GPS transmitter which enables to connect to Hinowa server, using a username and password, and view the position of the platform and detect possible malfunctions.

ONLINE DIAGNOSIS



**PROVISIONAL SPECIFICATIONS GL1780 PLATFORM**

	CAPACITY 200kg	CAPACITY 120kg
MAX WORKING HEIGHT .....	15380mm	17080mm
MAX HORIZONTAL WORKING OUTRACH (basket rotated):.....	6788mm	8067mm
PLATFORM ROTATION (non continuous, floor height >3m) .....	360°	
BASKET ROTATION .....	124°(+/-62°)	
JIB-ARTICULATED JOINT TYPE...../.....	88°(-2°/-90°)	
MACHINE TOTAL WEIGHT (ESTIMATED) .....	2100 kg	
HEAT ENGINE: .....	HONDA IGX390-13CV-3600rpm	
ELECTRIC MOTOR .....	2.2 kw/230V/50Hz single-phase 1500 rpm	
ELECTRICAL SYSTEM VOLTAGE.....	12 V	
HEAT ENGINE PUMPS .....	2x3.15 cc	
MAX TRANSLATION SPEED .....	1,3 km/h	
STAB. PLANT PRESSURE.....	175 bar	
AERIAL PART PLANT PRESSURE .....	210 bar	
MAX WIND SPEED .....	12,5 m/s	
MAX MANUAL FORCE ADMITTED .....	400 N	

