

# Hinowa®

Presents

## THE NEW ECOLOGICAL, BATTERY-POWERED GOLDLIFT 14.70 TRACKED AERIAL PLATFORM

### Features:

- 48 V electric engine with 2000 watt alternate current, supplied by a LITHIUM battery pack
- Battery loader on board allowing the batteries' recharge in case of need
- Lithium batteries weight less than traditional batteries
- No damages of lithium batteries if charged when not completely empty

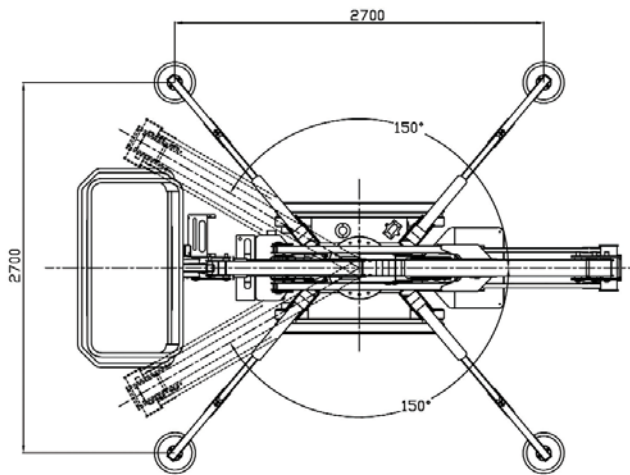
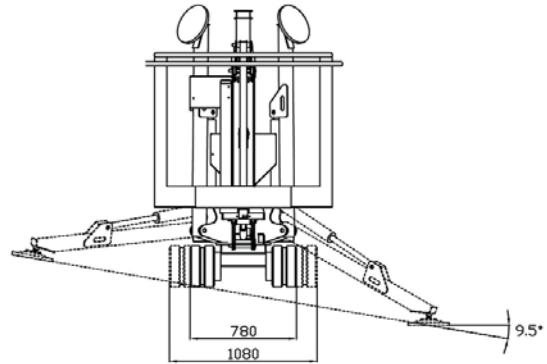
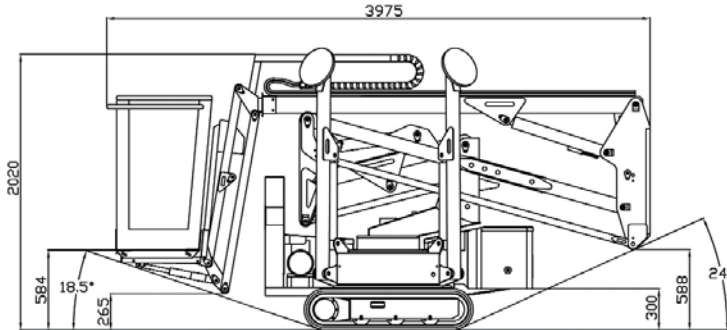
### Advantages:

- Machine's acoustic emissions eliminated
- No pollution, important when working indoors
- No inconveniences created by the electrical cable during positioning operations of the aerial platform
- To be used on building sites close to buildings or offices, religion places, libraries, study places, in historic centres or residential areas, in narrow or closed places or places where the electric system does not arrive



**TECHNICAL DATA**

**LITHIUM-ION**



Electric engine .....2kW/48V  
 Electric system voltage .....48V-12V  
 Lithium battery pack .....48V 90Ah  
 Endurance with charged batteries (estimated) .....4-5 h  
 Battery loader on board .....220V±30V 50÷60Hz  
 Optional battery loader .....110V±30V 50÷60Hz  
 Recharge time with completely empty batteries (estimated) ..4 h  
 Recharge time for 80% with completely empty batteries(estimated).....2 h  
 Allowed number of refills .....2000 cycles

Capacity .....	200kg .....	120kg
Aerial platform height (foot-board) .....	10,58m .....	11,94m
Max. working height .....	12,63m .....	14,00m
Std. basket dimensions .....	1330x694 H1100 mm	
Horizontal outreach .....	5,16m .....	6,24m
Max. working horizontal outreach .....	5,61m .....	7,00m
Rotation (not continuous) .....	300° .....	300°
N° operators .....	2 .....	1
N° operators with optional 1-man cage .....	1 .....	1
Jib-type articulation .....	80°(+0°/-80°)	
Max. working inclination .....	1°/2,2%	
Overall weight in transport configuration (estimated) .....	1700kg	
Hydraulic oil tank capacity.....	25 liters	
Double pump .....	2x3,15 cm <sup>3</sup>	
Max. pressure in translation mode/stab .....	175 bar	
Max. pressure aerial part .....	185 bar	
Max. slope.....	24°/53%	
Max. wind speed .....	12,5 m/s	
Max. length .....	3975 mm	
Width undercarriage .....	780-1080 mm	
Max. height .....	2020 mm	
Max. angle of attack .....	18,5°	
Max. stabilisation angle of attack .....	10°	
Side base stabilisers .....	2700 mm	

**PATENTED !**