

Sigma Telescopic Platform



PRODUCT DATA SHEET

Z26

The Z26 takes the highly versatile sigma/telescopic boom geometry onto a 7.5 tonne chassis. Almost 26m working height with up to 12.5m of up and over outreach with zero tailswing from a narrow 2.8m outrigger width.

The Z26 has the proven 'Z' control system of its smaller relations: simple proportional controls, basket load sensing, load sensing outrigger interlocks and zero tailswing.

The Z26 is also fitted with automatic self-levelling outrigger option for the UK.

The Z26 is supplied mounted and full fitted as standard to an Iveco 7.5 tonne GVW chassis and upwards (other chassis are available on request). This includes vehicle PTO, cab-mounted display for PTO hour clock and outrigger status, full aluminium decking and access steps to basket.

Operating Dimensions

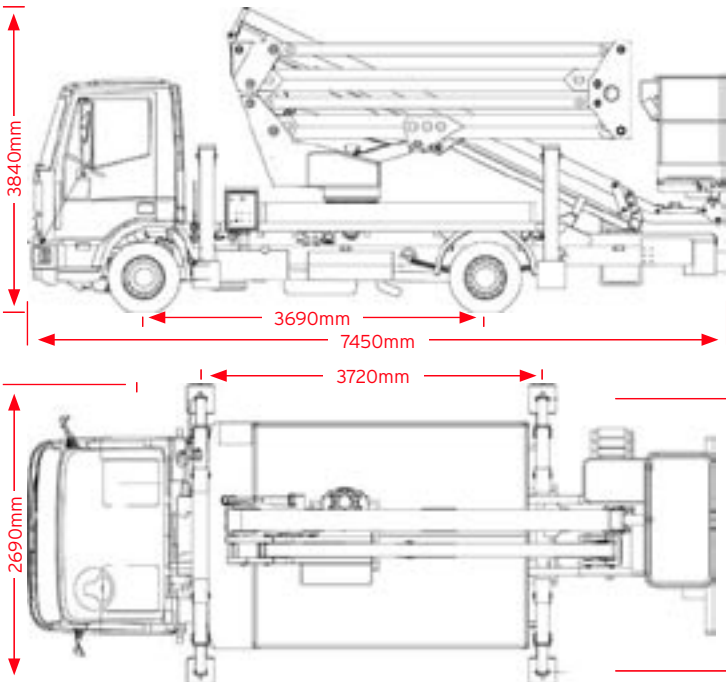
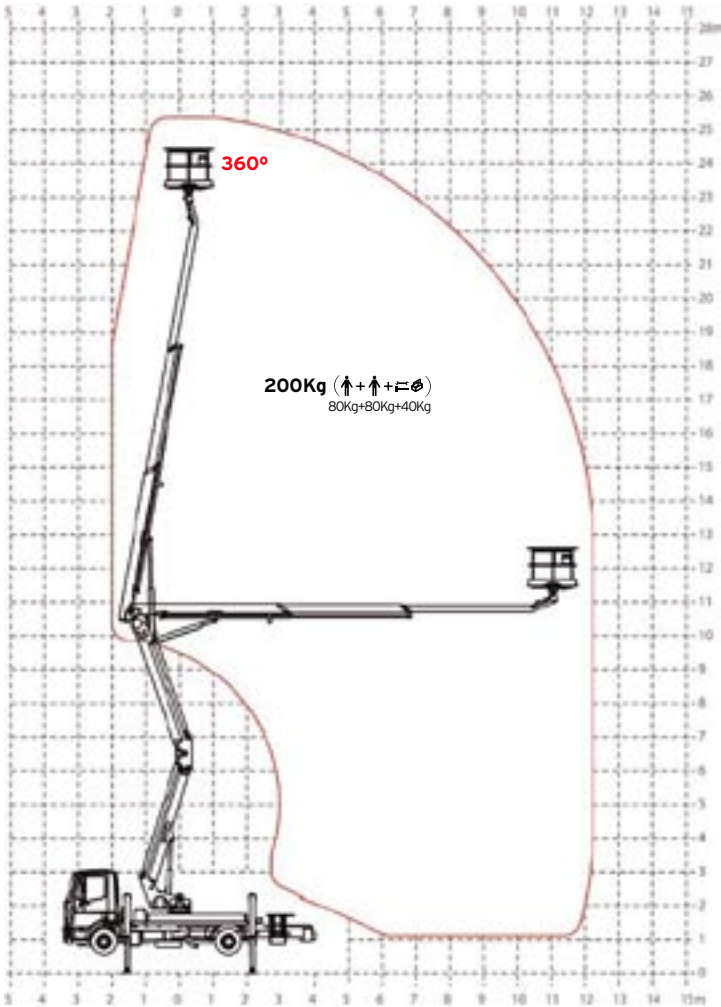
- Working Height 25.6m
- Working Outreach 12.5m
- Zero Tailswing
- Safe Working Loads 200Kg
- Automatic Outrigger Self-levelling
- Mounted on 7.5 tonne GVW chassis





Z26

Sigma Telescopic Platform



Specifications

Operating Dimensions

Working Height	25.6m
Platform Height	23.6m
Outreach from Centre	12.5m
Outrigger Footprint	(WxL) 2.85m x 3.72m
Rotation	360° Continuous

Basket

Rotation	80° + 80°
Safe Working Load	200Kg
Dimensions	1.4m x 0.7m x 1.1m(H)

Closed Dimensions

Length	7.45m
Width (Iveco)	2.60m
Height	3.84m
GVW	7500Kg
Kerb Weight	7220 Kg (Iveco ML 75E17k)

Safety Features

- Pressure sensitive outrigger interlocks c/w LED display
- Fail safe hydraulic circuit with check valves on all cylinders
- Automatic basket overload sensing c/w alarm indicator and cut-out.
- Zero Tailswing (does not project outside outrigger width)
- Full manual override for all functions (12v DC Optional)
- CE marked & meets or exceeds UK & European safety legislation

Technical Features

- Steel Chassis subframe and boom superstructure
- 4 No. 'A'-shape hydraulic outriggers (Auto-Leveling for UK).
- Aluminium checker plate decking with 150 mm tool tray walls
- Basket made of structural grade aluminium tube, dimensions mm 1400 x 700 x 1100
- Two stage Sigma + 2 stage telescopic top boom
- Continuous 360° turret rotation on turntable roller bearing
- Smooth, proportional electro-hydraulic controls at ground and basket
- Vehicle motor start and stop functions from basket and ground
- Hydraulic basket rotation 80° right + 80° left
- Hydraulic parallelogram system for basket levelling function
- Hydraulic system powered by vehicle power take off.
- Warning beeper horn when power takeoff is on
- Flashing beacon mounted to cab roof
- 110v AC outlet in basket
- PTO Hour-meter & Outrigger function display in the cab
- Standard colours RAL colour blue 5017 and white

Can be mounted on 7.5tonne GVW chassis and upwards. Iveco is standard, can be mounted on Mercedes, Renault, DAF. Please ask for further details.