

# Sigma Telescopic Platform

PRODUCT DATA SHEET



# Z17

The Z17 offers 17m working height and up to 8m working outreach from a 2.5m wide footprint.

Featuring CTE's renowned sigma/telescopic boom configuration enables maximum outreach from 2m upwards. Working vertically or horizontally or in any combination is easy with the Z17.

The Z17 shares the same proven control system and safety features as all of the 'Z' range: simple proportional controls, basket load sensing, load sensitive outrigger interlocks and zero tailswing.

The Z17 is supplied mounted and full fitted as standard to a Nissan Cabstar 3.5 tonne chassis cab (other chassis are available on request). This includes vehicle PTO, cab-mounted display for PTO hour clock and outrigger status, full aluminium decking and access steps to basket.

## Operating Dimensions

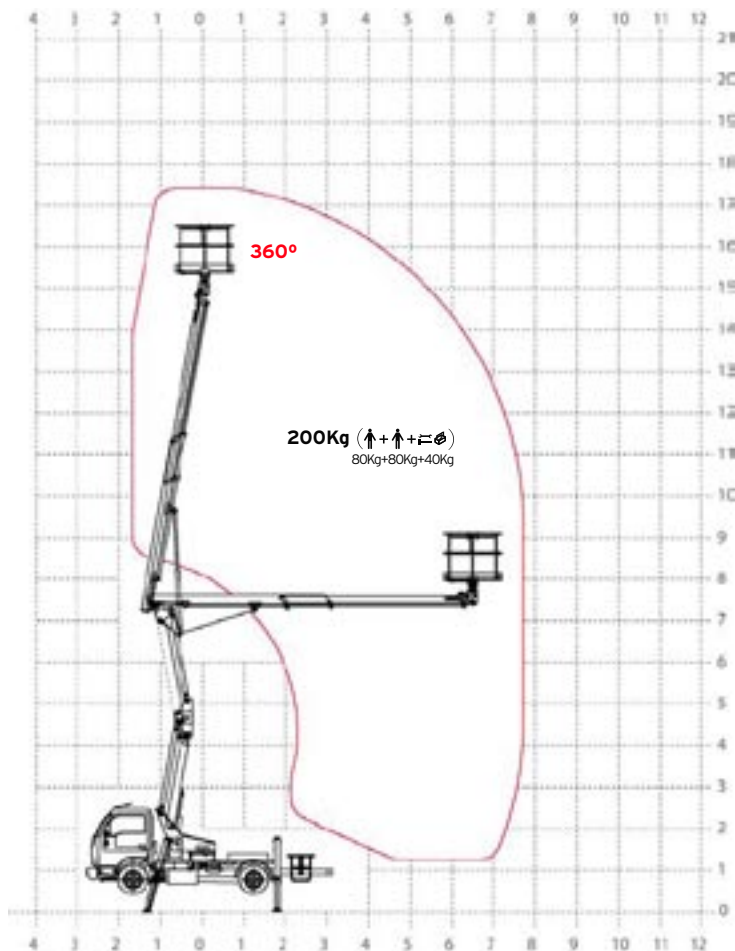
- Working Height 17.2m
- Platform Height 15.2m
- Safe Working Load 200kg
- Working Outreach 8.0m
- Zero Tailswing
- Mounted on 3.5 tonne GVW chassis





# Z17

## Sigma Telescopic Platform



### Specifications

#### Operating Dimensions

|                      |                 |
|----------------------|-----------------|
| Max Working Height   | 17.2m           |
| Max Close Height     | 15.2m           |
| Outreach from Centre | 8.0m            |
| Outrigger Footprint  | 2.5m x 3.1m     |
| Rotation             | 360° Continuous |

#### Basket

|                   |                   |
|-------------------|-------------------|
| Rotation          | 80° + 80°         |
| Safe Working Load | 200Kg             |
| Dimensions        | 1.4mx0.7mx1.1m(H) |

#### Closed Dimensions

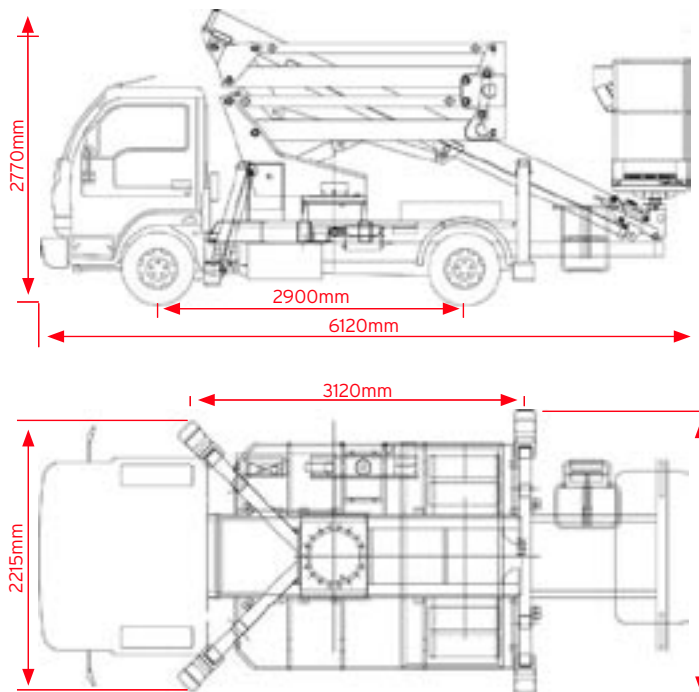
|                               |         |
|-------------------------------|---------|
| Length                        | 6.12m   |
| Width                         | 2.20m   |
| Height                        | 2.77m   |
| GVW                           | 3500Kg  |
| Kerb Weight (Nissan TL-35-10) | 3285 Kg |

#### Safety Features

- Pressure sensitive outrigger interlocks c/w LED display
- Fail safe hydraulic circuit with check valves on all cylinders
- Automatic Basket overload sensing c/w alarm, Indicator and cut out
- Zero Tailswing (does not project outside outrigger width)
- Full manual override for all functions (12v DC Optional)
- CE marked & meets or exceeds UK & European safety legislation

#### Technical Features

- Steel Chassis subframe and boom superstructure
- 4 No. 'A'-shape hydraulic outriggers
- Aluminium checker plate decking with 150 mm tool tray walls
- Basket made of structural grade aluminium tube, dimensions mm 1400 x 700 x 1100
- Two stage Sigma + single stage telescopic top boom
- Continuous 360° turret rotation on turntable roller bearing
- Smooth, proportional electro-hydraulic controls at ground and basket
- Vehicle motor start and stop functions from basket and ground
- Hydraulic basket rotation 80° right + 80° left
- Hydraulic parallelogram system for basket levelling function
- Hydraulic system powered by vehicle power take off.
- Warning beeper horn when power takeoff is on
- Flashing beacon mounted to cab roof
- 110v AC outlet in basket
- PTO Hour-meter & Outrigger function display in the cab
- Standard colours RAL colour blue 5017 and white



Can be mounted on 3.5tonne GVW chassis and upwards. Nissan Cabstar is standard, can be mounted on Iveco, Mercedes, Renault. Please ask for further details.