

Articulated Telescopic Platform

PRODUCT DATA SHEET



Z14

The Z14 offers a versatile up & over working envelope from a very compact 2.1m wide footprint. Almost 14m working height with up to 6.5m working outreach and only 5m closed length the Z14 is ideal for working in tight city or pedestrianised locations.

The Z14 has the same control and safety features as it's larger brothers: simple proportional controls, telescopic top boom, basket load sensing, load sensitive outrigger interlocks and zero tailswing option.

The Z14 is supplied mounted and full fitted as standard to a Nissan Cabstar 3.5 tonne chassis cab (other chassis are available on request). This includes vehicle PTO, cab-mounted display for PTO hour clock and outrigger status, full aluminium decking and access steps to basket.

Operating Dimensions

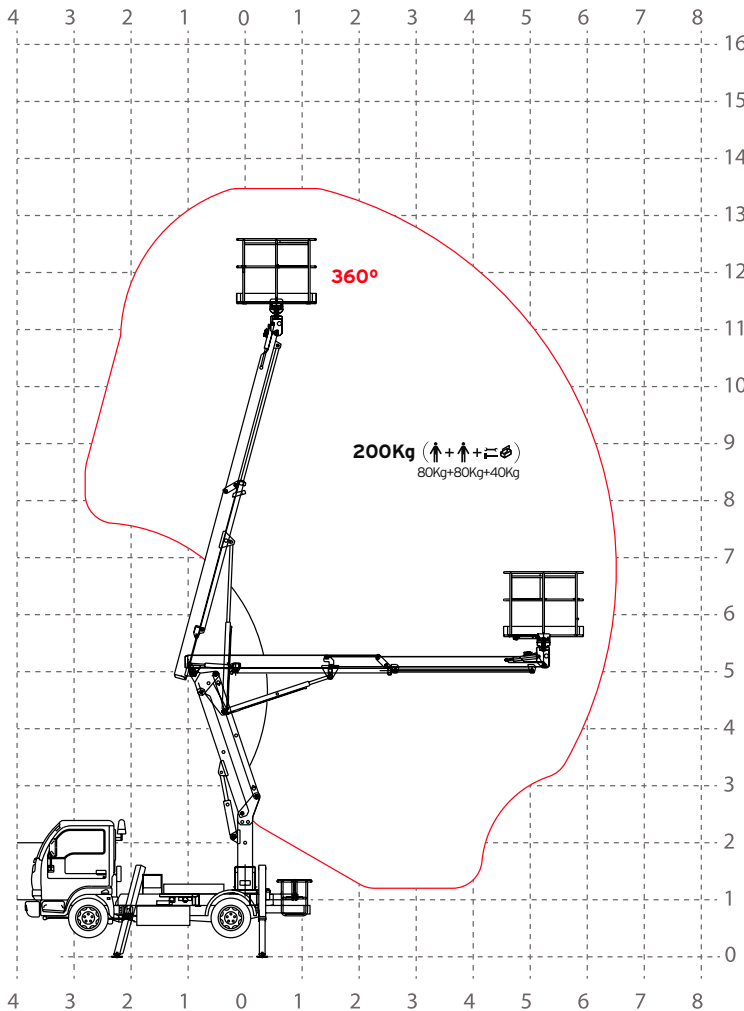
- Working Height 13.5m
- Platform Height 11.5m
- Safe Working Load 200kg
- Working Outreach 6.5m
- Mounted on 3.5tonne GVW chassis





Z14

Articulated Telescopic Platform



Specifications

Operating Dimensions

Working Height	13.5m
Platform Height	11.5m
Outreach from Centre	6.5m
Outrigger Footprint	2.4 x 2.6m
Rotation	360° Continuous

Basket

Rotation	80° + 80°
Safe Working Load	200Kg
Dimensions	1.4m x 0.7m x 1.1m (H)

Closed Dimensions

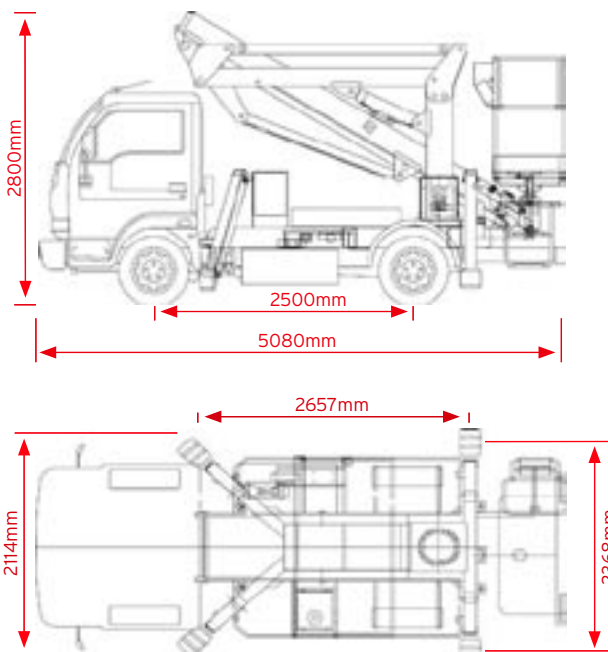
Length	5.08m
Width	2.11m
Height	2.8m
GVW	3400Kg
Kerb Weight (Nissan TL-34-10)	2980Kg

Safety Features

- Pressure sensitive outrigger interlocks c/w LED display
- Fail safe hydraulic circuit with check valves on all cylinders
- Automatic Basket overload sensing c/w alarm, Indicator and cut out
- Zero Tailswing (does not project outside outrigger width)
- Full manual override for all functions (12v DC Optional)
- CE marked & meets or exceeds UK & European safety legislation

Technical Features

- Steel Chassis subframe and boom superstructure
- 4 No. 'A'-shape hydraulic outriggers
- Aluminium checker plate decking with 150 mm tool tray walls
- Basket made of structural grade aluminium tube, dimensions mm 1400 x 700 x 1100
- Articulated plus single stage telescopic top boom
- Continuous 360° turret rotation on turntable roller bearing
- Smooth, proportional electro-hydraulic controls at ground and basket
- Vehicle motor start and stop functions from basket and ground
- Hydraulic basket rotation 80° right + 80° left
- Hydraulic parallelogram system for basket levelling function
- Hydraulic system powered by vehicle power take off.
- Warning beeper horn when power takeoff is on
- Flashing beacon mounted to cab roof
- 110v AC outlet in basket
- PTO Hour-meter & Outrigger function display in the cab
- Standard colours RAL colour blue 5017 and white



Can be mounted on 3.5tonne GVW chassis and upwards. Nissan Cabstar is standard, can be mounted on Iveco, Mercedes, Renault. Please ask for further details.